



JACK RUTBERG
FINE ARTS GALLERY

**The Gift
of Art**

Henri Matisse (1869-1954)

Le Grand Bois, 1906

Original Woodcut on Wove Paper

18 3/4 x 14 7/8 inches

Posthumous Impression Aside from the Signed Edition

JRFA #11440

Provenance:

Private Collection, Paris

Galerie Belle et Belle, Paris

Modernism Fine Arts, NYC

Literature:

Henry Matisse: Catalogue Raisonne L'Oeuvre Grave, Tome I, Margerite Duthuit-

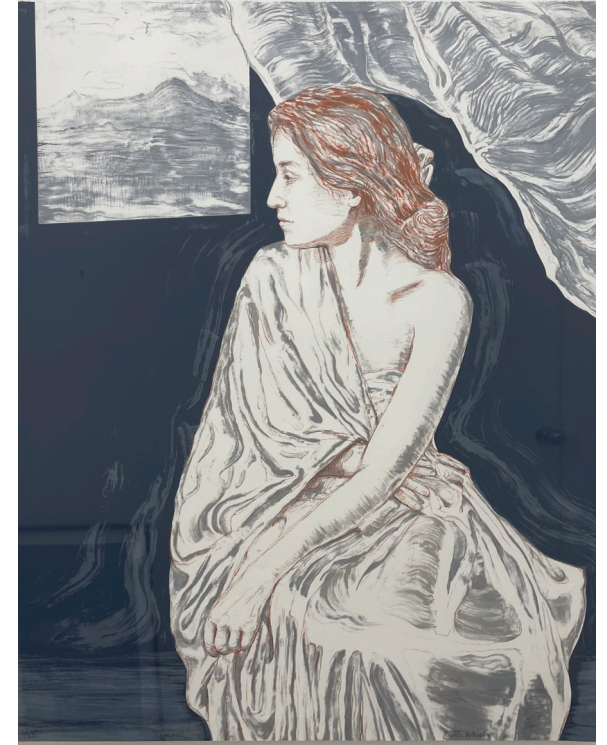
Matisse & Claude Duhuit, eds. (Paris: 1983), pp. 246-247 & 317



First exhibited in 1907, and at one time believed to be a linocut, this work proved to actually be a woodcut from which an edition of fifty impressions were printed. It was thought that the block for this important subject was destroyed. However, the California art dealer Frank Perls discovered the original block for *Le Grand Bois* covered in blue and white paint at the home of Matisse's elder son, Jean, a short time after Henri Matisse's death. The block was cleaned and a small number of proofs were printed, including this uncommon example. The block now resides in the collection of the Victoria & Albert Museum, London.

\$9,000

Unframed



Ruth Weisberg

Repose, 2011

Original Color Lithograph

28 x 22 3/8 inches

Signed and Dated Lower Right

Titled Lower Center

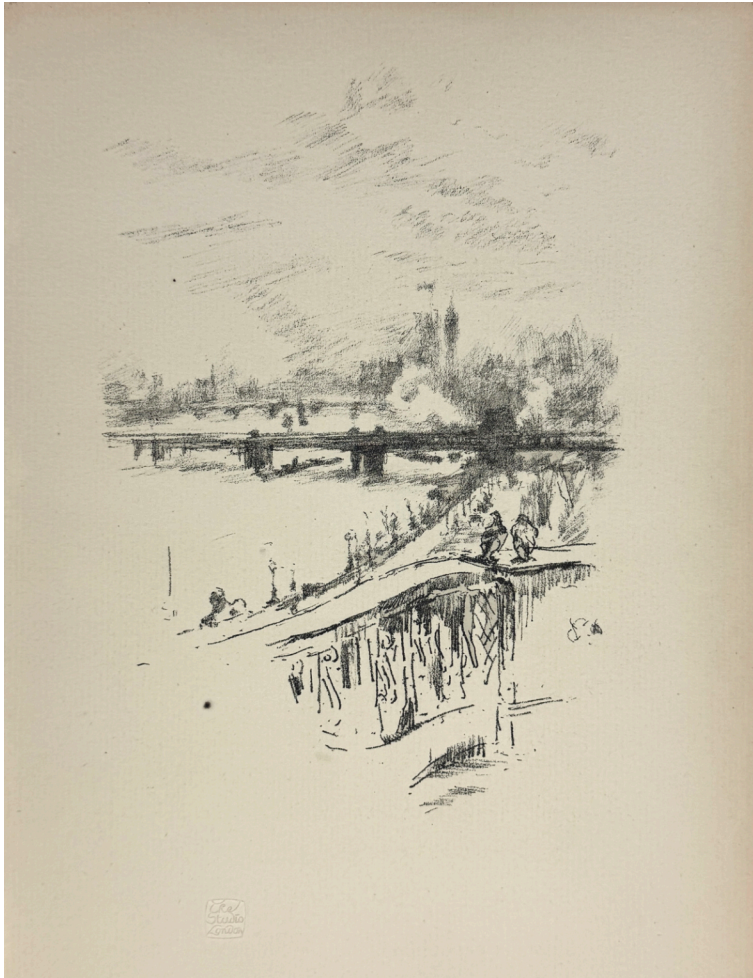
Edition 11/25

JRFA #10962

\$2,400

Unframed

[Click to Inquire](#)



James Abbott McNeill Whistler
Savoy Pigeons, 1896
 Original Lithograph
 7 7/8 x 5 1/2 inches
 Monogram in Stone Center Right
 Way 118; AIC 154
 JRFA #11774

This view of the Thames with Parliament and "Big Ben" in the distance was created while Whistler and his ailing wife resided in London's Savoy Hotel, and depicts a solitary pair of pigeons resting of the Whistler's balcony.

\$600
 Unframed

James Abbott McNeill Whistler
Gants de Suède, 1890
 Original Lithograph
 8 1/2 x 4 inches
 Monogram in Stone Center Right
 Way 26; AIC 35
 JRFA #11773

\$600
 Unframed



[Click to Inquire](#)

Georges Rouault (1871-1958)

***Nu* from *Réincarnations du Père Ubu*, 1928**

Original Etching and Aquatint

10 1/2 x 6 3/8 inches

22 x 18 inches Framed

Chapon Rouault 19e

JRFA #11732

\$700

Framed



Georges Rouault (1871-1958)

***Aide-Bourreau portant un bois de la Croix*
from *The Passion*, 1936**

Original Color Aquatint

12 1/4 x 8 1/2 inches

21 x 17 inches Framed

Chapon Rouault 273b

JRFA #11735

With the collector's stamp of Henri Marie
Petiet (Lugt 5031), pre-eminent French
collector and dealer of prints editioned by
Ambroise Vollard.

\$2800

Framed

[Click to Inquire](#)



Elie Nadelman (1882-1946)
Figure, c. 1940-1945
 Ceramic
 7 3/4 x 3 5/8 x 3 inches
 Initialed "EN"
 Inscribed #2 and Labeled "Inwood Pottery" on verso
 JRFA #6805

\$7,500

Francisco Zúñiga (1912-1998)
Tres Desnudos Sentados
(Three Seated Nudes), 1959
 Ink and Charcoal on Paper
 9 x 11 inches
 16 1/4 x 18 1/4 inches Framed
 Signed and Dated Lower Left
 Zuniga Catalogue Raisonne #892A
 JRFA #1449

\$3,400
 Framed



[Click to Inquire](#)

Ben Shahn (1898-1969)

***Pleiades*, 1960**

Serigraph, Hand Coloring, and Gold Leaf

18 x 24 1/4 inches

27 1/2 x 33 inches Framed

Signed Lower Right

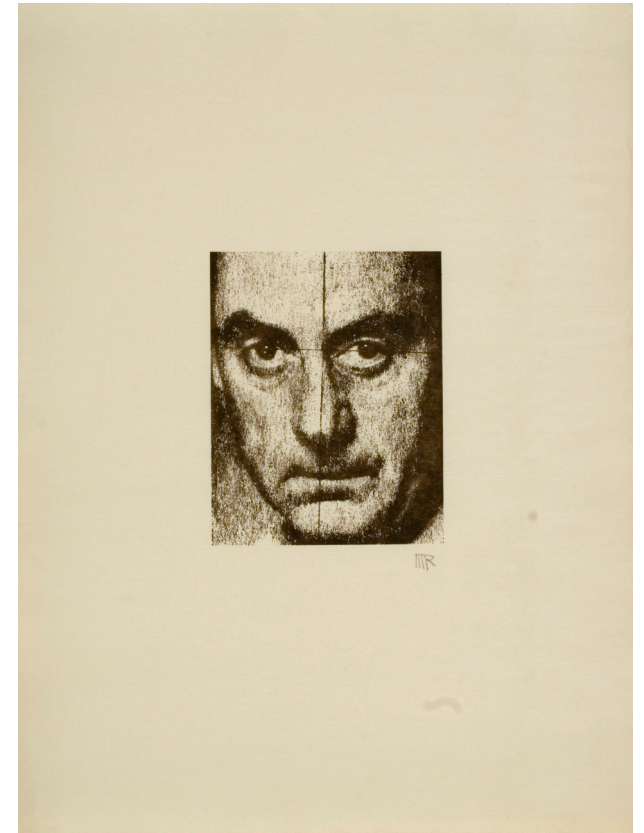
Edition of 54

Prescott #42

JRFA #3376

\$4,000

Framed



Man Ray (1890-1976)

***Self-Portrait*, 1947**

Lithograph

22 1/2 x 16 3/4 inches

Monogrammed Lower Right

Edition: 100 Arches, 100 Japan

JRFA #4530

\$2,300

Unframed



Sam Francis (1923-1994)
Untitled, 1976
 Original Lithograph in Two Colors
 33 x 25 inches
 37 1/2 x 29 1/4 inches Framed
 Signed Lower Right
 Dated and Numbered 7/30 Lower Left
 Reference: SF.212; L.204
 JRFA #9965

\$2,400
 Framed

Sam Francis (1923-1994)
An Other Set – Y, 1964
 Original Lithograph on Kochi Paper
 15 5/8 x 22 3/4 inches (Sheet)
 Signed and Inscribed "Artist Proof" Lower Center
 Reference: L.66; SF.75
 Published by the Pasadena Art Museum, CA
 JRFA #11561

A rare artist proof of the central image of the triptych created for the *Pasadena Box* series published by the Pasadena Art Museum in 1964.

\$4,200
 Unframed



[Click to Inquire](#)

Antoniucci Volti (1915-1989)

***Reclining Nude*, c. 1965**

Conte Crayon on Paper

18 1/2 x 24 inches

27 x 33 inches Framed

Signed Lower Left

JRFA #11729

\$2,200

Framed



Reuben Nakian (1897-1986)

***Europa and the Bull*, c. 1965**

Ink on Paper

14 x 16 1/2 inches

17 3/4 x 20 1/2 inches

Framed

Signed Lower Left

JRFA #11501

\$2,200

Framed



[Click to Inquire](#)



Rene Magritte (After), (1898-1967)
***La Folie Almayer ou L'Arbre Rose*, 1968**

Color Etching
 7 3/4 x 5 3/4 inches
 14 x 12 inches Framed
 Stamp Signature Lower Right
 Numbered 133/150 Lower Left
 Reference: Kaplan and Baum 18
 JRFA #11175

\$5,200
 Framed

George Herms (b. 1935)
***Home Poem*, 1985**
 Assemblage with Working Clock
 23 1/2 x 17 x 4 1/4 inches
 Signed, Dated, and Titled on Bottom
 Edition 23/58
 JRFA #4021

\$2,800



[Click to Inquire](#)

Karel Appel (1921-2006)

***Floating Family*, 1976**

Hand-Painted Cast Stone Relief Sculpture

25 1/2 x 25 1/2 x 6 inches

Signed and Dated Lower Right; Inscribed "H.C." on Verso

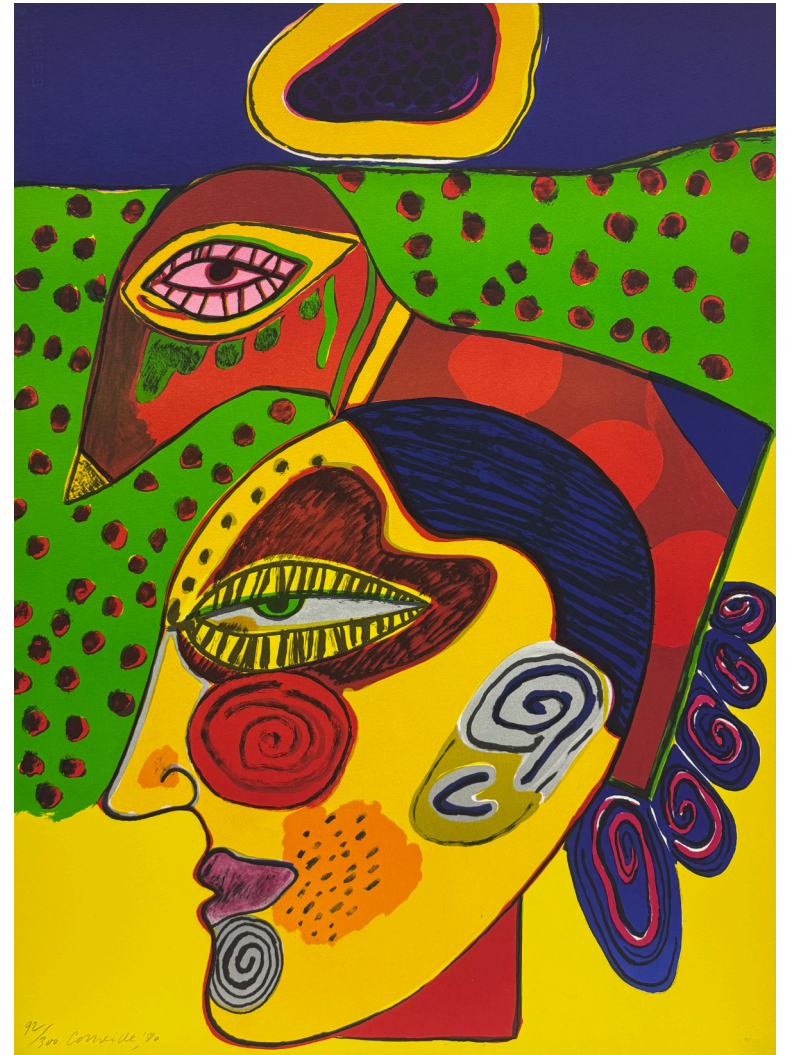
13 of 13 H.C.

The edition included 99 numbered casts plus 13 Artist's Proofs and 13 H.C. Proofs.

Justification affixed on Verso: Signed and Numbered H.C. by Artist and by Walter F. Maibaum, Director of Editions Press, San Francisco (Publisher)

JRFA #11577

\$8,900



Corneille, (1922-2010)

***Tete De Femme Et Oiseau Pensif*, 1980**

Color Lithograph

28 1/4 x 20 1/2 inches

Signed, Numbered and Dated Lower Left

Printer's Blind Stamp Lower Right Corner

Edition 91/300

JRFA #11504

\$200

Unframed

[Click to Inquire](#)



Claire Falkenstein (1908-1997)
Untitled, 1972
 Color Serigraph on Wove Paper
 19 3/4 x 27 1/4 inches
 24 1/4 x 32 inches Framed
 Published by Edizioni Plurima, Portogruaro
 Signed Lower Right
 Épreuve d'artiste" Lower Left
 Aside from the Suite Edition of 100
 JRFA #11535

\$1,800
 Framed

Patrick Graham
Acts: Graffiti, 1994
 Mixed Media on Board
 31 7/8 x 44 1/8 inches
 35 x 17 inches Framed
 Signed and Dated Lower Right
 JRFA #4507

\$9,200
 Framed



[Click to Inquire](#)

Friedensreich Hundertwasser (1928-2000)

***Doodles*, 2001**

Color Etching with Aquatint

9 3/4 x 8 1/8 inches

Edition 1905/2000

Signed with Estate Stamp (Book #08786)

Reference: 99IA/LXXXVI

JRFA #8422

This etching is accompanied by the
Hundertwasser Catalogue Raisonné.

\$1,200

Unframed



Jordi Alcaraz (b. 1963)

Dues Gotes

Dos Gotas

***Two Drops*, 2004**

Mixed Media Assemblage

11 3/4 x 15 3/4 inches

Signed Lower Right

Numbered Lower Left

Edition 50/50

JRFA #9815

\$1,700

Ready for Display

[Click to Inquire](#)



George Nama (1939-2025)
Untitled, 1958
 Painted Collage on Paper
 8 1/8 x 5 1/4 inches
 17 x 14 inches Framed
 Signed and Dated Lower Right
 JRFA #11596

\$2,800
 Framed

Jerome Witkin (b. 1939)
Jennifer Brown Posing, 1982
 Ink on Paper
 19 x 24 inches
 22 x 27 inches Framed
 Signed and Dated Lower Center
 JRFA #6591

\$9,500
 Framed



[Click to Inquire](#)

One of Southern California's longest established art galleries, Jack Rutberg Fine Arts, formerly on La Brea Avenue in Los Angeles since 1981, has been a source for established and beginning collectors as well as museums internationally.

The gallery, now located in Pasadena, offers a wide range of modern and contemporary paintings, drawings, original prints, and sculpture by American, European and Latin American artists.

Whether considering a new addition to your collection, or to simply enjoy art in an intimate setting, the gallery welcomes all.

JACK RUTBERG FINE ARTS

600 South Lake Avenue, #102 Pasadena, CA 91106-3955
Tel. 323-938-5222 jrutberg@jackrutbergfinearts.com

Gallery Hours: Tue-Fri 10:00 a.m.-6:00 p.m. Sat 10:00 a.m.-5:00 p.m.