



Francisco Zúñiga

FRANCISCO ZÚÑIGA

Sculpture & Drawings





JACK RUTBERG FINE ARTS

Los Angeles, California

Tel: 1 323 938 5222 www.jackrutbergfinearts.com jrutberg@jackrutbergfinearts.com

Published by Jack Rutberg Fine Arts in support
of The Getty Foundation's region-wide endeavor
Pacific Standard Time: LA/LA

Exhibition:
Francisco Zúñiga: Sculpture & Drawings
January 20 - March 17, 2018
Extended through April 28, 2018
Jack Rutberg Fine Arts, Los Angeles

© 2018 by:
Jack Rutberg Fine Arts, Inc.
357 North La Brea Avenue
Los Angeles, CA 90036-2517
Tel. 1 323 938 5222 Fax: 1 323 938 0577
www.jackrutbergfinearts.com

Images © The Estate of Francisco Zúñiga

ISBN: 978-1-880566-24-4



FRANCISCO ZÚÑIGA

Sculpture & Drawings

As a participating gallery in the Getty's region-wide endeavor, **Pacific Standard Time: LA/LA**, Jack Rutberg Fine Arts presents this exhibition, **Francisco Zúñiga: Sculpture & Drawings**, bringing together selected works on paper and an exceptional breadth of sculpture in bronze, wood and stone, masterfully portraying Zúñiga's indigenous women as an elemental force. Drawing upon pre-Columbian and classical sources, they are often depicted as sensual, but always heroic. These sculptures and drawings of women — as matriarch or adolescent — have today become powerful iconic images, widely establishing Francisco Zúñiga as Mexico's and Costa Rica's greatest 20th Century sculptor, and according to one recent study, Mexico's most internationally collected artist.

The monumentality of Zúñiga's works is exemplified by the large-scale sculpture *Madre e Hija Sentada* (*Mother and Daughter Seated*) which serves as a centerpiece of the exhibition. In his writing on this extraordinary bronze sculpture, art historian Carlos Echeverría cited: "*Madre e Hija Sentada* standing at an imposing height, is an iconic example of Zúñiga's mature sculpture. The two figures rest with their backs to one another, their weary expressions belying the strength in their postures; their massive cloaked forms rise from the ground almost like the twin volcanoes of the valley of Mexico, primordial and mysterious."

Included in this Zúñiga exhibition are two exceedingly rare mahogany wood sculptures — the major work, *Mother with Child on Her Hip*, following its exhibition in museums for the past 10 years, and *Mujer Sentada* (*Seated Woman*). Also shown are a recently re-discovered work in onyx, other iconic bronze sculptures, as well as Zúñiga's sought-after works on paper. The figure-ground relationship in his drawings evoke the same monumental qualities found in his sculptures. What is revealed is that regardless of medium and scale, Zúñiga's works have an extraordinary capacity to evoke remarkably poignant qualities; at once tender, stoic, and heroically monumental. While inspired by, and depicting the indigenous women of Mexico, the works are distinguished by their universality, as Francisco Zúñiga's works can be found internationally in private and institutional collections.

Born in Costa Rica in 1912, Francisco Zúñiga moved to Mexico in 1936, where he resided for the rest of his life. Zúñiga's works are included in the collections of the Hirshhorn Museum and Sculpture Garden, Washington, D.C.; the Metropolitan Museum of Art and the Museum of Modern Art in New York; Fogg Art Museum, Harvard University; Phoenix Museum of Art; the Museo de Arte Costarricense, Costa Rica; Museum of Modern Art, Mexico; Latin American Museum of Art, Buenos Aires and Middelheim Open Air Sculpture Museum, Antwerp, among many others. In 2016, The Museo Nacional de Arte in Mexico acquired the monumental masterpiece *Group of Four Standing Women* and presented a tribute exhibition of an additional 11 works, which the museum cited as being the most significant addition to its collection in the past 20 years. *Group of Four Standing Women* was recently exhibited at the Dallas Museum in a major exhibition of Latin American art, following its exhibition at the Grand Palais in Paris.

Zúñiga's importance was early realized in Los Angeles and throughout California, where his reputation and legions of collectors — both private and with museums — have been formidable for decades. Monumental sculptures by Zúñiga can be found in the collections and sculpture gardens of important Southern California museums such as the Los Angeles County Museum of Art, UCLA Sculpture Gardens, University of Southern California, Santa Barbara Museum of Art, and San Diego Museum of Art. The Los Angeles County Museum of Art's Graphic Arts Council selected Zúñiga in 1976 for its annual commissioned print. That original lithograph, *Familia Indígena I*, proved its most successful commission in its history. In 1982, Los Angeles Mayor Tom Bradley declared November 19 "Francisco Zúñiga Day".

This Francisco Zúñiga exhibition illustrates how Los Angeles' modern art history converges with the modern art history of Mexico. That history is further underscored by Jack Rutberg Fine Arts' prior exhibitions, *Artists of Mexico*, *Hans Burkhardt in Mexico* and *Rico Lebrun in Mexico*, presented in concert with the Getty's endeavor, **Pacific Standard Time: LA/LA**.

— Jack Rutberg, Spring 2018

EL POZO (THE WELL), 1987

Graphite on White Paper

21 1/2 x 29 1/2 inches

Signed and Dated Lower Left

JRFA #9480

Literature:

Francisco Zúñiga Catalogue Raisonné, Volume IV, Drawings 1971-1989

Albedrío/Fundación Zúñiga Laborde, A.C., 2006;

Illustrated Plate 3514, Page 782.





TRES MUJERES (THREE WOMEN), 1967

Watercolor and Drawing

19 5/8 x 25 1/2 inches

Signed and Dated Lower Left

JRFA #8795

To be included in Volume V of the Francisco Zúñiga Catalogue Raisonné

TWO SEATED WOMEN, 1968

Watercolor and Drawing

19 3/4 x 25 9/16 inches

Signed and Dated Lower Right

JRFA #11339

To be included in Volume V of the Francisco Zúñiga Catalogue Raisonné





ROSA CON JARRITO (ROSA WITH A SMALL POT), 1980

Crayon and Pastel on Beige Paper

19 3/4 x 27 1/2 inches

Signed and Dated Lower Right

JRFA #9470

Literature:

Francisco Zúñiga Catalogue Raisonné, Volume IV, Drawings 1971-1989

Albedrio/Fundación Zúñiga Laborde, A.C., 2006;

Illustrated Plate 2873, Page 646.

**MADRE E HIJA SENTADA, 1975
(MOTHER AND DAUGHTER SEATED)**

Bronze

47 1/4 x 55 1/4 x 33 3/4 inches

Signed and Dated on Base

Edition I/IV

JRFA #11323

Provenance:

Acquired from B. Lewin Galleries by Private Collector, Phoenix, AZ

Passed through Inheritance, Private Collection, Scottsdale, AZ

Acquired by Private Collector, Paradise Valley, AZ 2004

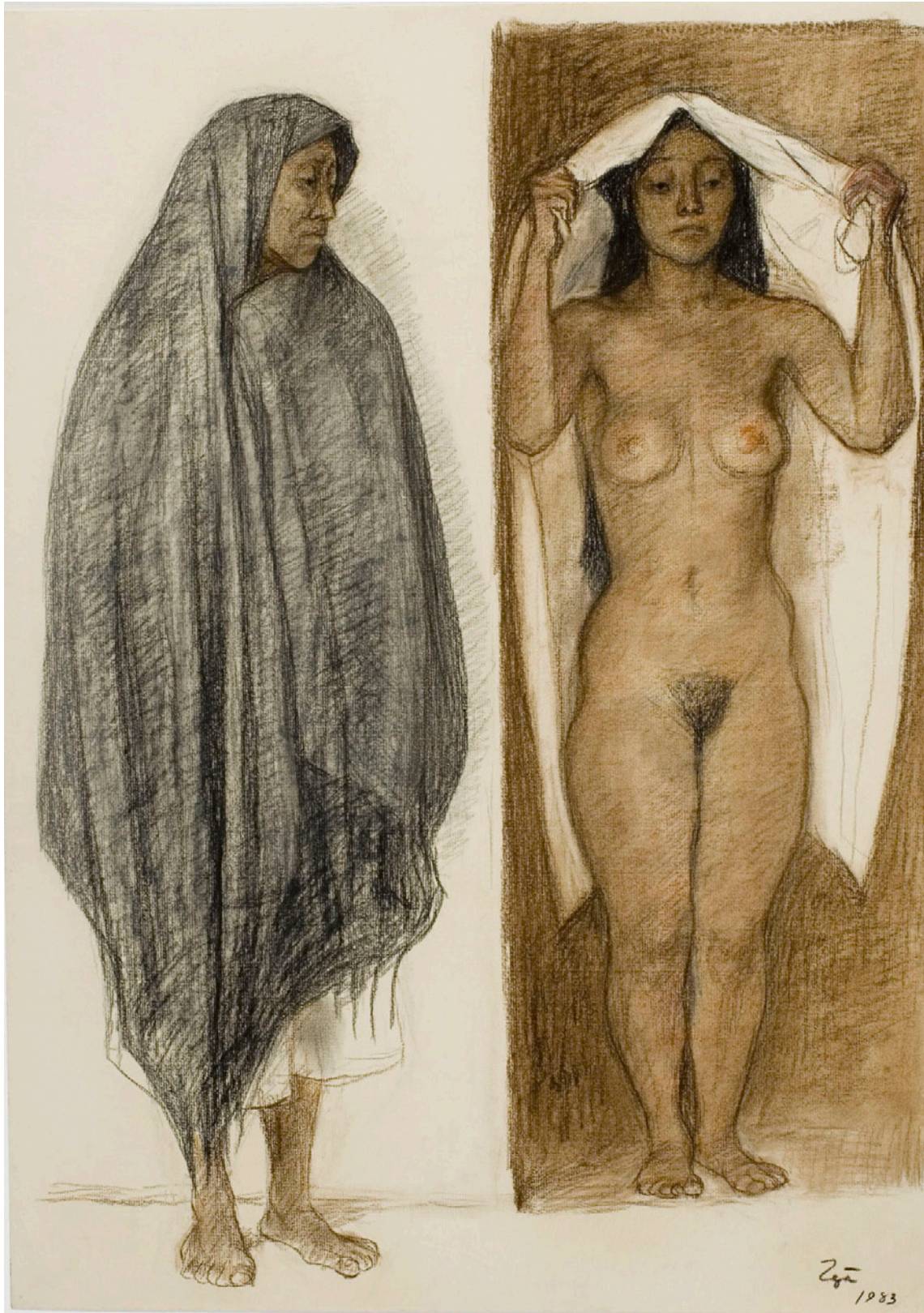
Literature:

Francisco Zúñiga: Catalogue Raisonné, Volume I, Sculpture 1923-1993

Albedrio/Fundación Zúñiga Laborde, A.C., 1999

Illustrated Plate 626, Page 369.





LA ANUNCIACION (THE ANNUNCIATION), 1983

Crayon and Pastel on Ivory Paper

27 1/2 x 19 3/4 inches

Signed and Dated Lower Right

JRFA #9475

Exhibited:

Francisco Zúñiga: A National Homage

Museo del Palacio de Bellas Artes, Mexico City, Mexico, 1994

Literature:

Francisco Zúñiga Catalogue Raisonné, Volume IV, Drawings 1971-1989,

Albedrío/Fundación Zúñiga Laborde, A.C., 2006;

Illustrated Plate 3096, Page 695.

Francisco Zúñiga, Instituto Nacional de Bellas Artes, 1994

Catalogue, Illustrated Plate, Page 151.

MUJER DE BLANCO (WOMAN IN WHITE), 1971

Watercolor on Paper

19 1/2 x 25 1/2 inches

Signed and Dated Lower Right

JRFA #9101

Literature:

Francisco Zúñiga Catalogue Raisonné, Volume IV, Drawings 1971-1989,

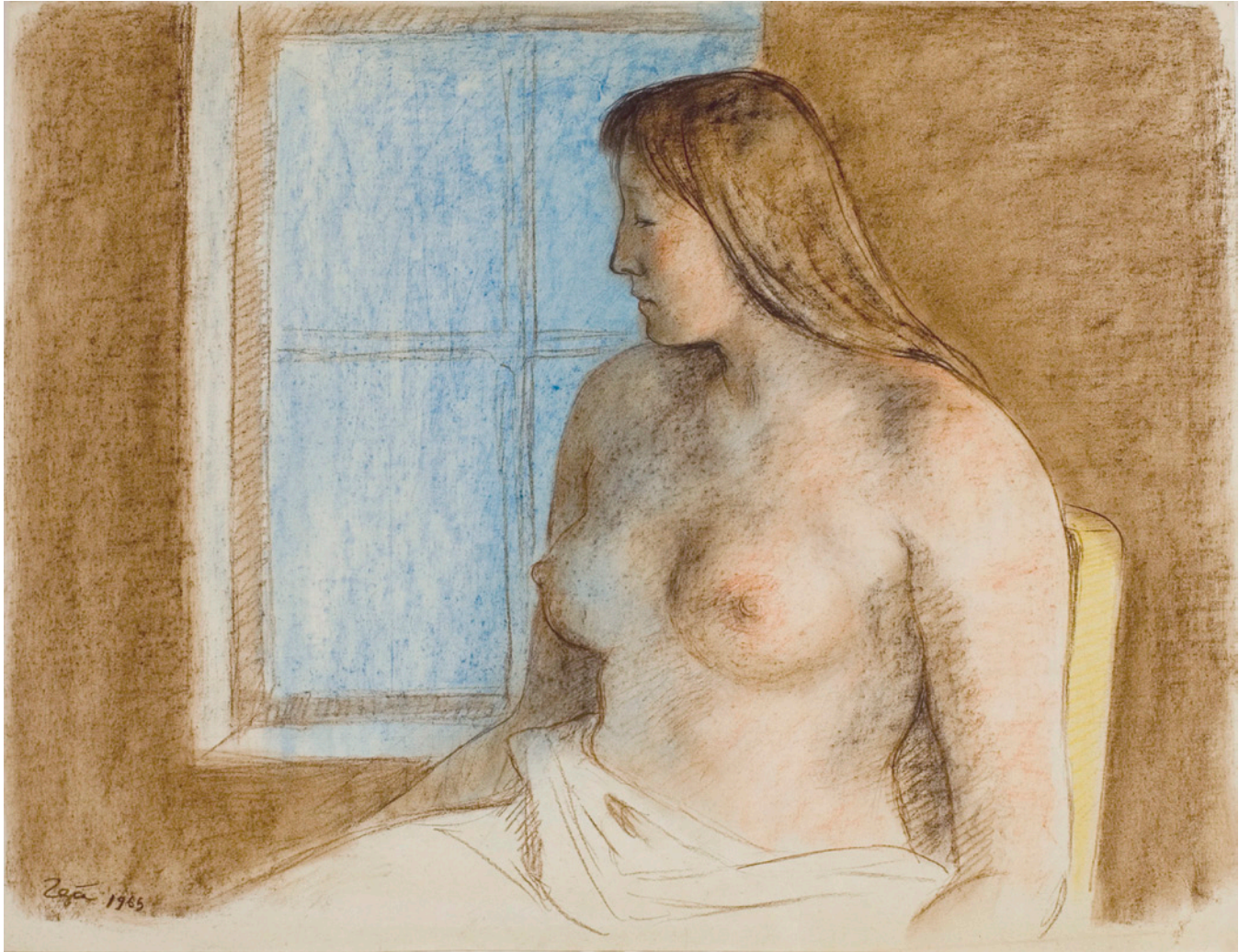
Albedrío/Fundación Zúñiga Laborde, A.C., 2006;

Illustrated Plate 1826, Page 395.



JOVEN EN LA VENTANA, 1965
(YOUNG WOMAN AT THE WINDOW)
Crayon and Pastel on White Paper
19 3/4 x 25 1/2 inches
Signed and Dated Lower Left
JRFA #9450

Literature:
Francisco Zúñiga Catalogue Raisonné, Volume III, Drawings 1927-1970
Albedrio/Fundación Zúñiga Laborde, A.C., 2006;
Illustrated Color Plate 1223, Page 243.





MUJER DE PIE (STANDING WOMAN), 1970

Bronze

18 3/4 x 7 7/8 x 6 1/2 inches

Signed, Dated and Numbered

Edition IV/VI

JRFA #10092

Literature:

Francisco Zúñiga Catalogue Raisonné, Volume I, Sculpture 1923-1993

Albedrío/Fundación Zúñiga Laborde, A.C., 1999;

Illustrated Plate 584, Page 345.



EVELIA RECLINADA (EVELIA RECLINING), 1983

Bronze

23 3/4 x 36 1/2 x 17 3/4 inches

Signed and Dated on Base

Edition III/VI

JRFA #11324

Literature:

Francisco Zúñiga: Catalogue Raisonné, Volume I, Sculpture 1923-1993

Albedrío/Fundación Zúñiga Laborde, A.C., 1999

Illustrated Plate 909, Page 525.

DESNUDO RECLINADO (RECLINING NUDE), 1973

Sepia Conte on White Paper

19 3/4 x 25 1/2 inches

Signed and Dated Lower Right

Reference: M-80.137

JRFA #9457

Literature:

Francisco Zúñiga Catalogue Raisonné, Volume III, Drawings 1927-1970

Albedrío/Fundación Zúñiga Laborde, A.C., 2006;

Illustrated Plate 1703, Page 355.

Francisco Zúñiga, by Carlos Echeverría

Ediciones Galería de Arte Misrachi, 1980; Illustrated Plate 137, Page 137.





JUCHITECA SENTADA (SEATED JUCHITECAN), 1976

Crayon on Ivory Paper

17 x 25 inches

Signed and Dated Lower Left

JRFA #9460

Literature:

Francisco Zúñiga Catalogue Raisonné, Volume IV, Drawings 1971-1989,

Albedrío/Fundación Zúñiga Laborde, A.C., 2006;

Illustrated Plate 2364, Page 522.



MUJER ENVULETA (ENVELOPED WOMAN), 1973

Onyx Sculpture

12 7/8 x 9 3/4 x 10 1/4 inches

Signature and Date Incised

JRFA #11338

Related to:

Francisco Zúñiga Catalogue Raisonné, Volume I, Sculpture 1923-1993,
Albedrío/Fundación Zúñiga Laborde, A.C., 1999,
Illustrated Plate 665, Page 392.



DESNUDO RECLINADO (RECLINING NUDE), 1972

Drawing on Paper

19 1/2 x 25 3/4 inches

Signed and Dated Lower Right

JRFA #9363

To be included in Volume V of the Francisco Zúñiga Catalogue Raisonné

DESNUDOS DE JÓVENES (YOUNG NUDES), 1973

Sepia Crayon on White Paper
19 3/4 x 25 1/2 inches
Signed and Dated Lower Right
JRFA #9459

Literature:

Francisco Zúñiga Catalogue Raisonné, Volume IV, Drawings 1971-1989
Albedrío/Fundación Zúñiga Laborde, A.C., 2006;
Illustrated Plate 2007, Page 437.



MATERNITY, 1966

Watercolor and Charcoal

25 1/2 x 19 1/2 inches

Signed and Dated Lower Right

JRFA #10603

Provenance:

Private Collection

Literature:

Francisco Zúñiga Catalogue Raisonné, Volume III, Drawings 1927-1970,
Albedrío/Fundación Zúñiga Laborde, A.C., 2006;
Illustrated Plate 1310, Page 261.





GRUPO DE CUATRO MUJERES DE PIE, 1974

Bronze, 80 x 86.5 x 45.3 inches

National Museum of Art, Mexico City

**GRUPO DE CUATRO FIGURAS CON NIÑO, 1960
(GROUP OF FOUR FIGURES WITH CHILD)**

Bronze

7 3/8 x 7 1/2 x 4 1/4 inches

Signed and Dated Lower Back

Edition of III

JRFA #10070

Provenance:

Private Collection, Palm Beach, FL

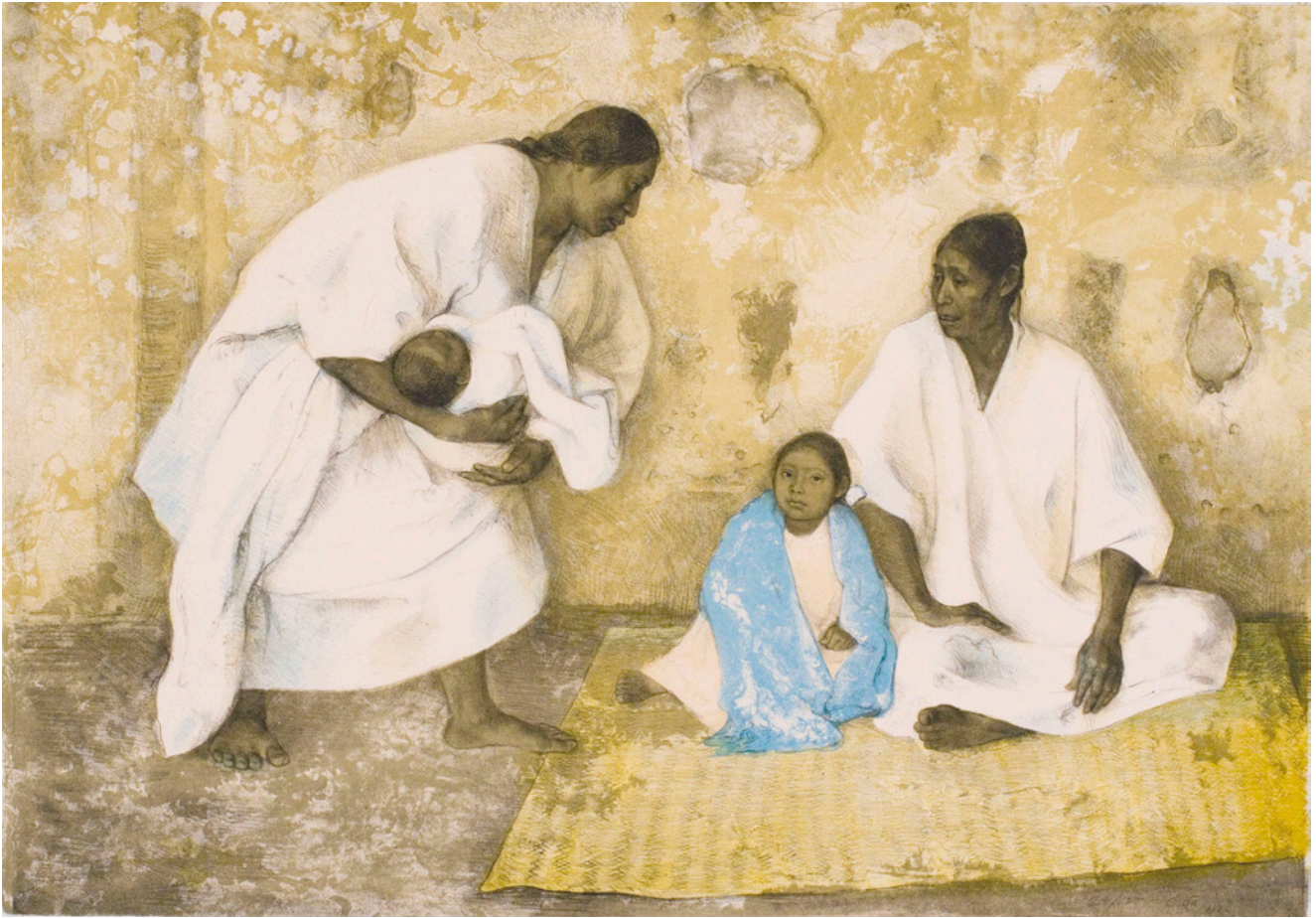
Literature:

Francisco Zúñiga Catalogue Raisonné, Volume I, Sculpture 1923-1993,

Albedrio/Fundación Zúñiga Laborde, A.C., 1999;

Illustrated Plate 318, Page 222. (incorrectly catalogued as 1962)





FAMILIA INDIGENA, 1976

Original Six Color Lithograph
25 x 35 inches
Signed and Dated Lower Right
Numbered 29/125 Lower Right
Reference: Brewster 26
JRFA #9206

Literature:

*Francisco Zúñiga Catalogue Raisonné Volume II,
Oil Paintings, Prints and Reproductions 1927-1986,*
Albedrío/Fundación Zúñiga Laborde, A.C., 2003;
Illustrated Color Plate 258, Page 280.

Francisco Zúñiga: The Complete Graphics 1972-1984
Brewster Gallery, 1984;
Illustrated Color Plate 26.

Commissioned by the Los Angeles County Museum of Art Graphic Arts Council.

**MADRE CON DOS NIÑOS, 1954
(MOTHER AND TWO CHILDREN)**

Bronze

16 x 4 1/2 x 4 1/8 inches

Signed, Numbered and Dated on Base

Edition I/III

JRFA #10586

Literature:

Francisco Zúñiga Catalogue Raisonné, Volume I, Sculpture 1923-1993,

Albedrio/Fundación Zúñiga Laborde, A.C., 1999;

Illustrated Plate 148, Page 137.



**MADRE CON NIÑO EN LA CADERA, 1982
(MOTHER WITH CHILD AT HER HIP)**

Mahogany

47 1/4 x 17 3/8 x 13 3/8 inches

Edition: Unique

JRFA #9371

Exhibited:

September 2008 - June 2011

Palm Springs Museum, Palm Springs, CA

June 2011 - December 2017

Portland Art Museum, Portland, OR

Literature:

Francisco Zúñiga Catalogue Raisonné, Volume I, Sculpture 1923-1993,

Albedrío/Fundación Zúñiga Laborde, A.C., 1999;

Illustrated Plate 810, Page 472.

Francisco Zúñiga

Instituto Nacional de Bellas Artes, 1994

Catalogue, Illustrated Plate, Page 147.





MUJERES CON BATEAS (WOMEN WITH TRAYS), 1985

Green and Sepia Crayon on Gray Paper

19 3/4 x 27 1/2 inches

Signed and Dated Lower Right

JRFA #9479

Literature:

Francisco Zúñiga Catalogue Raisonné, Volume IV, Drawings 1971-1989,
Albedrío/Fundación Zúñiga Laborde, A.C., 2006;
Illustrated Plate 3355, Page 751.



**MUJER DE PÍE CON BATEA, 1984
(STANDING WOMAN WITH TRAY)**

Bronze

13 3/4 x 7 1/2 x 4 3/8 inches

Signed, Dated and Numbered on Base

Edition I/III

JRFA #6972

Literature:

Francisco Zúñiga Catalogue Raisonné, Volume I, Sculpture 1923-1993,
Albedrío/Fundación Zúñiga Laborde, A.C., 1999;
Illustrated Plate 963, Page 553.

DOS DESNUDOS DE PIE (TWO STANDING NUDES), 1983

Pastel and Charcoal on Paper

19 5/8 x 27 5/8 inches

Signed and Dated Lower Right

JRFA #6979

Provenance:

The Estate of the Artist

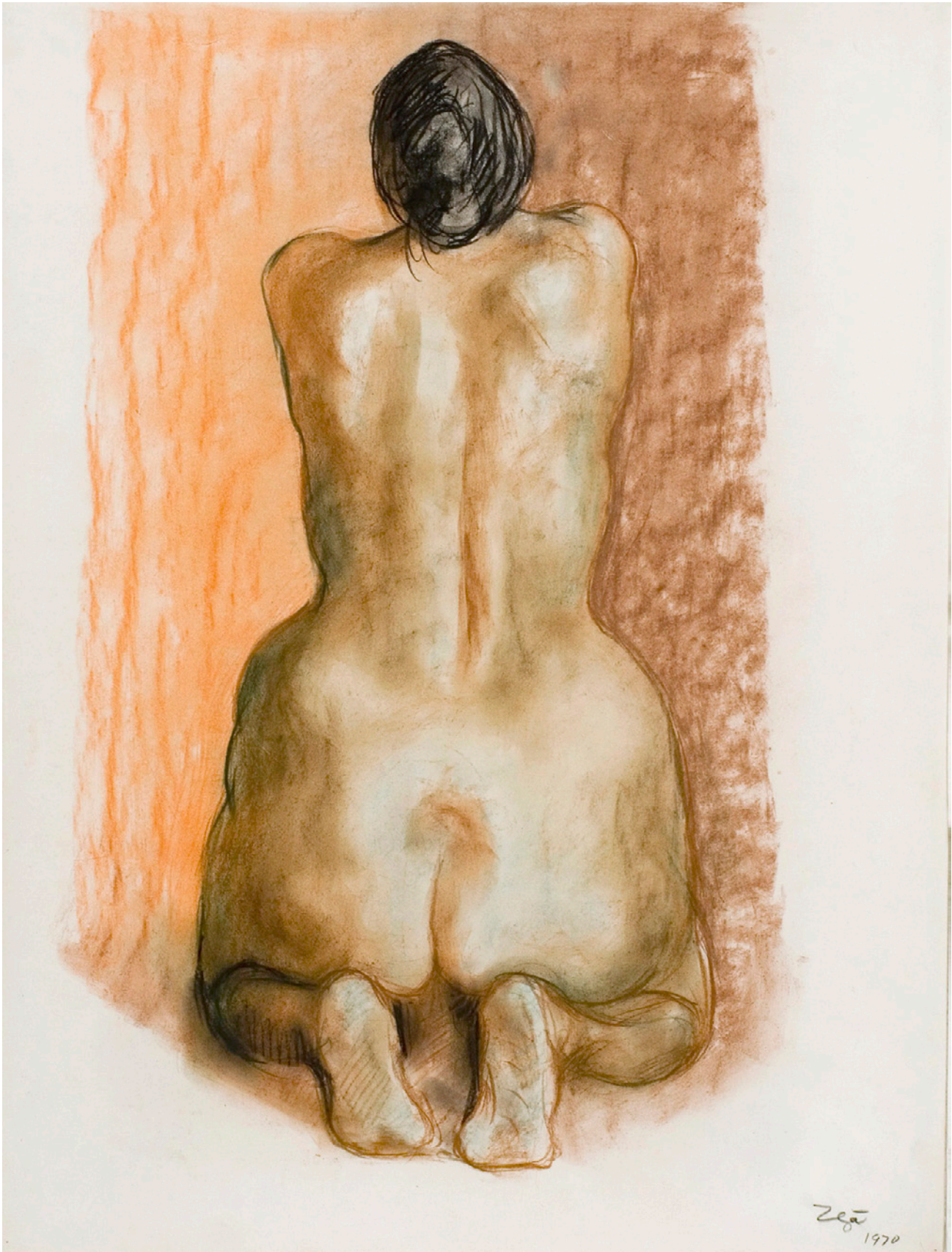
Literature:

Francisco Zúñiga Catalogue Raisonné, Volume IV, Drawings 1971-1989,

Albedrío/Fundación Zúñiga Laborde, A.C., 2006;

Color Plate 3086, Page 693.





DESNUDO DE ESPALDA (NUDE FROM THE BACK), 1970

Crayon and Pastel on White Paper

25 1/2 x 19 3/4 inches

Signed and Dated Lower Right

JRFA #9456

Literature:

Francisco Zúñiga Catalogue Raisonné, Volume III, Drawings 1927-1970

Albedrío/Fundación Zúñiga Laborde, A.C., 2006

Illustrated Plate 1671, Page 347.



**MUJER CON LA MANO EN LA CARA, 1980
(WOMAN WITH HAND ON FACE)**

Bronze

23 1/2 x 7 1/4 x 5 3/4 inches

Signed, Dated and Numbered on Base

Edition V/VI

JRFA #10587

Literature:

Francisco Zúñiga Catalogue Raisonné, Volume I, Sculpture 1923-1993,
Albedrío/Fundación Zúñiga Laborde, A.C., 1999;
Illustrated Plate 876, Page 508.



**DESNUDO CON NIÑO Y VELA, 1978
(NUDE WITH BOY AND CANDLE)**

Crayon on Paper

19 3/4 x 27 1/2 inches

Signed and Dated Lower Right

JRFA #9464

Literature:

Francisco Zúñiga Catalogue Raisonné, Volume IV, Drawings 1971-1989

Albedrío/Fundación Zúñiga Laborde, A.C., 2006;

Illustrated Plate 2635, Page 587.

Francisco Zúñiga

ARTnews, Review: National, January 2008 Issue

Illustrated Image, Page 133.

MUJER SENTADA (SEATED WOMAN), 1963

Mahogany

16 x 6 1/2 x 8 1/2 inches

Edition: Unique

JRFA #10707

Literature:

Francisco Zúñiga Catalogue Raisonné, Volume I, Sculpture 1923-1993,

Albedrío/Fundación Zúñiga Laborde, A.C., 1999;

Illustrated Plate 138, Page 132.





TRES MUJERES SENTADAS (THREE SEATED WOMEN), 1985

Pastel and Charcoal on Paper

19 5/8 x 27 1/2 inches

Signed and Dated Lower Right

JRFA #6988

Literature:

Francisco Zúñiga Catalogue Raisonné, Volume IV, Drawings 1971-1989,

Albedrío/Fundación Zúñiga Laborde, A.C., 2006;

Illustrated Plate 3322, Page 744.

**MADRE E HIJA SENTADAS, 1976
(MOTHER AND DAUGHTER SEATED)**

Bronze

10 1/4 x 11 3/4 x 8 1/2 inches

Signature, Date and Edition Number Incised

Edition IV/VI

JRFA #10487

Literature:

Francisco Zúñiga. Catalogue Raisonné, Volume I, Sculpture 1923-1993,
Albedrío/Fundación Zúñiga Laborde, A.C., 1999,
Illustrated Plate 676, Page 396.





**DOS MUJERES SENTADAS, 1973
(TWO SEATED WOMEN)**

Crayon and Pastel on Purple Tinted Paper

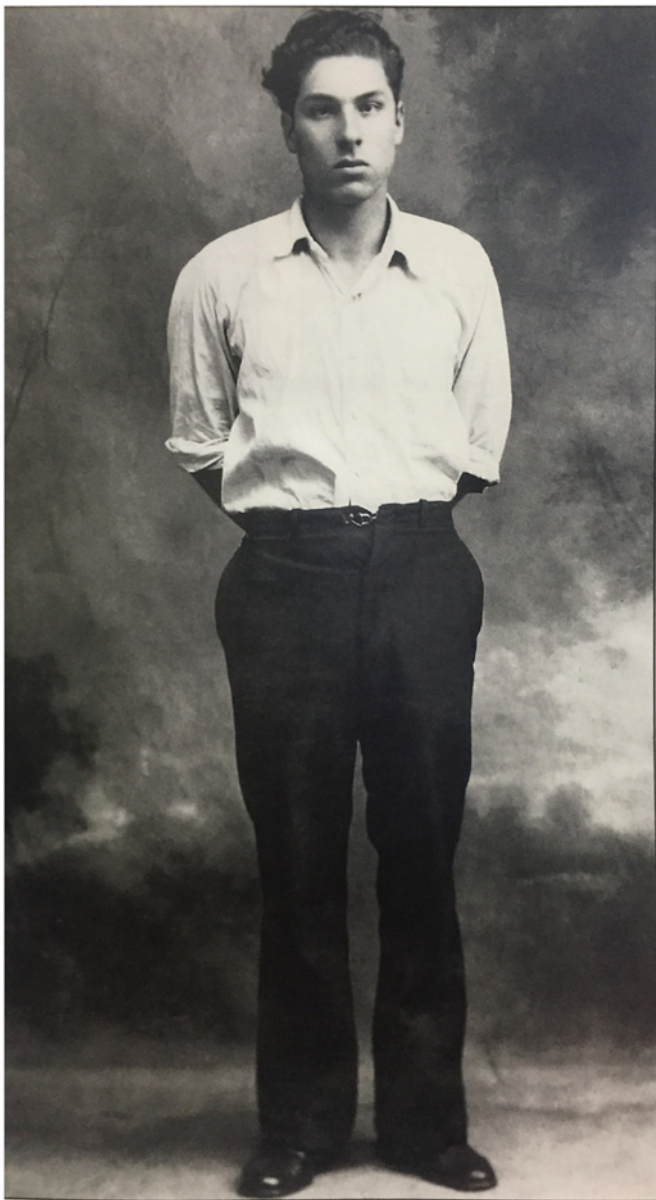
19 5/8 x 25 5/8 inches

Signed and Dated Lower Left

JRFA #8917

Literature:

Francisco Zúñiga Catalogue Raisonné, Volume IV, Drawings 1971-1989,
Albedrío/Fundación Zúñiga Laborde, A.C., 2006;
Illustrated Plate 2033, Page 443.



Francisco Zuniga, 1936

Selected Public Collections

Achenbach Foundation, Fine Arts Museums of San Francisco, San Francisco, CA
Everson Museum of Art, Syracuse, NY
Fogg Art Museum, Harvard University, Cambridge, MA
Franklin D. Murphy Sculpture Garden, University of California, Los Angeles, CA
Hakone Open Air Museum, Hakone, Japan
The Hirshhorn Museum and Sculpture Garden, Washington D.C.
Latin American Museum of Art of Buenos Aires, Argentina
Los Angeles County Museum of Art, Los Angeles, CA
The Metropolitan Museum of Art, New York, NY
The Mexican Museum, San Francisco, CA
Middleheim Sculpture Garden, Antwerp, Belgium
Museo Biblioteca Pape, Monclova, México
Museo de Aguascalientes, México
Museo de Arte, Ponce, Puerto Rico
Museo de Arte Costarricense, San José, Costa Rica
Museo de Arte Moderno, México
Museo Nacional de Arte, México
Museum of Contemporary Art San Diego, San Diego, CA
Museum of Latin American Art, Long Beach, CA
The Museum of Modern Art, New York, NY
The Phoenix Art Museum, Phoenix, AZ
Prefecture of Kiyose, Japan
Samuel P. Harn Museum of Art, University of Florida, Gainesville, FL
San Diego Museum of Art, San Diego, CA
Santa Barbara Museum of Art, Santa Barbara, CA
Syracuse University Art Galleries, Syracuse, NY
Ulrich Museum of Art, Wichita State University, Wichita, KS
The University of Arizona Museum of Art, Tucson, AZ
University of Southern California Fisher Museum of Art, Los Angeles, CA



JACK RUTBERG FINE ARTS

Los Angeles, California

Tel: 1 323 938 5222 www.jackrutbergfinearts.com jrutberg@jackrutbergfinearts.com