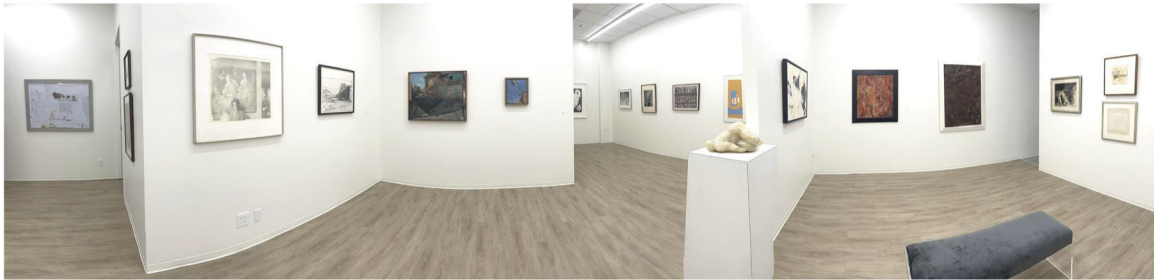


JACK RUTBERG FINE ARTS

600 South Lake Ave #102, Pasadena, CA 91106 Tel (323) 938-5222 jrutberg@jackrutbergfinearts.com

Collector's Choice 2023



**We Are Pleased To Present An Eclectic Range Of
28 Works For Your Consideration**

Scroll down to view works



JORDI ALCARAZ (b. 1963)

Exercici de Desparaició, 2018

Ejercicio de Desparicion

Exercise In Disappearance

Painting, Book, Plexiglass, Wood

23 1/2 x 31 1/2 x 3 1/4 inches

Unique

Signed Lower Right

Signed and Dated; Titled on Verso

JRFA #11359



HANNELORE BARON (1926-1987)

Untitled, 1987

Mixed Media Collage

8 $\frac{5}{8}$ x 9 $\frac{5}{8}$ inches

Signed and Dated on Verso

JRFA #1098

Literature:

Hannelore Baron: Collage & Assemblage

Published by Jack Rutberg Fine Arts, Los Angeles, CA, 2016

Illustrated Color Plate, Page 26



NORMAN BLUHM (1921-1999)

Abstraction, 1974

Oil on Paper on Canvas

23 ³/₄ x 35 ¹/₂ inches

Signed Lower Right and Verso

JRFA #9635

Provenance:

Babcock Driscoll Galleries NY, 2008



HANS BURKHARDT (1904-1994)

Head, 1937

Oil on Canvas

20 x 16 inches

Signed and Dated on Verso: "1937 NY"

JRFA #1497

See Exhibitions and Provenance on next page

Continued – Hans Burkhardt
View Image on prior page

Provenance:

Acquired directly from the artist, Los Angeles, CA
Jack Rutberg Fine Arts, Inc., Los Angeles, CA
Private Collection, Chambersburg, PA, 1998
Jack Rutberg Fine Arts, Inc., Los Angeles, CA, 2011
Private Collection, Los Angeles, CA, 2011

Exhibited:

Hans Burkhardt: Paintings of the 1930s
Sid Deutsch Gallery, New York, NY
January 1987

NEWYORK/NEW YORK: The Avant Garde from Mid-Century
February 25-April 23, 2023
Loveland Museum, Loveland, CO



FALKENSTEIN, CLAIRE (1908-1997)

Untitled, 1972

Color Serigraph on Wove Paper

19 3/4 x 27 1/4 inches

From *Venezia Ha Dettato Così* Portfolio

Published by Edizioni Plurima, Portogruaro

Signed Lower Right, Numbered Lower Left

Edition 86/100

JRFA #11534



OSKAR FISCHINGER (1900-1967)

COLOR SINFONY, 1957

Oil on Board / 13 x 12 1/2 inches

Signed "O.W. Fischinger"

Dated and Monogrammed Lower Left

Estate Stamped on Verso

Reference: D 394

JRFA #7065

See Exhibitions and Provenance on next page
Continued – Oscar Fischinger
View Image on prior page

Provenance:

Estate of the Artist, Long Beach, CA
Augusto Lodi, Pasadena, CA
Private Collection, Sunset Beach, CA
Private Collection, Inglewood, CA

Exhibited:

Oskar Fischinger: Motion Paintings
March 11-May 28, 2005
Jack Rutberg Fine Arts, Los Angeles

Goethe-Institut Washington, D.C.
September 8-October 26, 2005

Oskar Fischinger: Movement and Spirit
March 31-June 24, 2007
MOCRA, St. Louis University, MO

Thresholds: MOCRA at 20 - Part Two: The Second Decade
February 16 - May 18, 2014
MOCRA, St. Louis University, MO



SAM FRANCIS (1923-1994)

Untitled, 1975

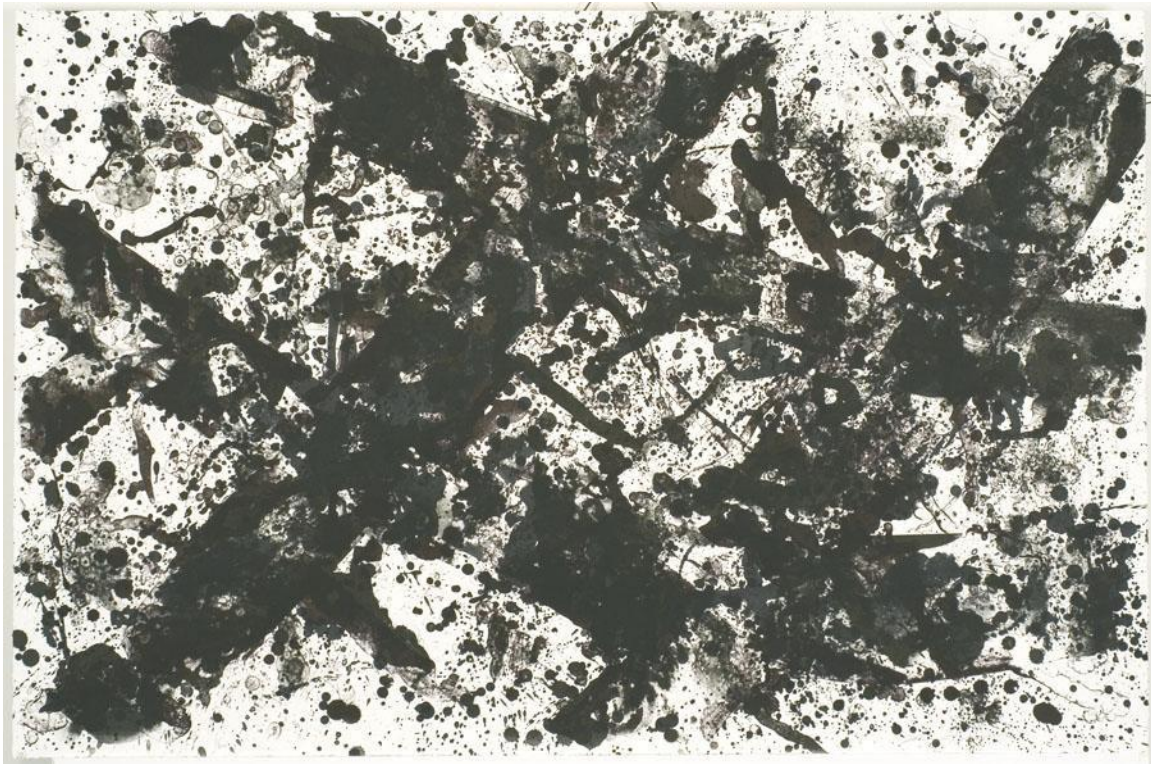
Original Lithograph / 33 x 25 inches

Signed Lower Right

Dated and Numbered 3/29 Lower Left

Reference: SF.199; L.179

JRFA #9963



SAM FRANCIS (1923-1994)

Untitled, 1974

Original Lithograph in Four Colors

27 1/2 x 41 5/8 inches

Signed Lower Right; Dated and Numbered 1/30 Lower Left

Reference: SF.190; L.171

JRFA #9974



PATRICK GRAHAM (b. 1943)

Table, 2008-09

Mixed Media on Board

32 x 44 inches

Signed and Dated Upper Right

JRFA #9934

Exhibited:

Patrick Graham – fact of the matter

May 22-August 31, 2010

Jack Rutberg Fine Arts, Los Angeles, CA

Literature:

PATRICK GRAHAM - fact of the matter

Published by Jack Rutberg Fine Arts, Los Angeles, CA, 2010

Color Plate 17, Page 53



FREDERICK HAMMERSLEY (1919-2009)

More, 1963

Painted Collage on Wood Panel

9 x 8 inches / (collage: 7 x 6 inches)

Artist's label on verso and label from The Art
Council of the Los Angeles County Museum
of Art's Rental Gallery.

JRFA #11428



HUBERT KAPPEL (1910-1982)

Untitled, 1952-3

Oil on Canvas

30 ¼ x 26 inches

Signed, Dated Lower Right and on Verso

JRFA #9648

Literature:

Rediscovering An American Hugh Kappel Abstract Expressionist

Published by Birdsall Haase Gallery, St. Paul, MN, 2008.

Illustrated Color Plate Back Cover



PAUL KLEE (1879-1940)

Kind (Kleine Fassung); Child (Small Version), 1930

Pencil on paper laid on paper mount (with ink outline)

16 1/4 x 17 in. / 8 5/8 x 11 in. (Drawing)

Signed Upper Left in Ink; Titled, Dated and Inscribed in Ink "U4" lower center
on the artist's paper mount

JRFA #11426

See Exhibitions and Provenance on next page

Continued – Paul Klee
View Image on prior page

Provenance:

Lily Klee, Bern 1940-46
Klee-Gesellschaft, Bern 1946-50
Curt Valentin (Buchholz Gallery:
Valentin Gallery) Berlin/New York, c. 1950
Berggruen & Cie, Paris
Philippe Leclercq
Galerie Jan Krugier, Geneva
Wolpe Gallery, Cape Town
The Piccadilly Gallery, LTD., London
Private Collection, New York

Literature:

W. Grohmann, *Paul Klee: Handzeichnungen 1921-1930*, Potsdam, 1934, no. 38.

The Paul Klee Foundation, Museum of Fine Arts, Berne, ed.,
Paul Klee: Catalogue Raisonné, Volume 5, London, 2001, Page 470, no. 5220



MARK LICARI (b. 1975)

Weekday, 2011

Ink, Colored Pencil, Watercolor and Collage on Paper

22 x 15 inches

Signed and Dated Lower Right

JRFA #11223

Exhibited:

Surreal/ Unreal Part 2

June 17-August 19, 2017

Jack Rutberg Fine Arts, Los Angeles, CA



RENÉ MAGRITTE (after) 1898-1967

The Tree (La Folie Almayer), 1968

Color Etching on Pink Ground

7 ³/₄ x 5 ³/₄ inches (Plate); 11 x 8 ⁵/₈ inches (Sheet)

Stamp Signature

Edition 133/150

Reference: Kaplan and Baum 18

JRFA #11175

See Exhibitions and Provenance on next page

Continued – René Magritte
View Image on prior page

Exhibition:
San Diego Surreal
February 23 - June 16, 2019
Oceanside Museum of Art, Oceanside, CA

Literature:
San Diego Surreal
Oceanside Museum of Art, Oceanside, CA
Illustrated Plate, Page 4



ANDRE MASSON (1896-1987)

SISYPHUS, 1946

Red Crayon, Ink Wash and Ink

16 3/4 x 21 inches

JRFA #11439

Provenance:

Estate of Lawrence Saphire

(authority on Masson graphic works)

See Exhibitions and Provenance on next page

Continued – Andre Masson
View Image on prior page

Exhibited:

Dali, Picasso and the Surrealist Vision

October-December 2005

The Wadsworth Atheneum, Hartford, CT

Literature:

Dali, Picasso and the Surrealist Vision,

The Wadsworth Atheneum, Hartford, CT. 2005, exhibition catalogue



ROBERTO MATTA (1911-2002)

Les Ob! Tomobiles VIII, 1972

Etching and Aquatint on Japon Paper

Plate VIII from Suite of 10

16 3/8 x 21 3/4 inches (Plate); 20 x 25 7/8 inches (Paper)

Signed Lower Right; Numbered 17/100

Aside the Edition of 100 on Arches

JRFA #6751

Literature:

Sabatier 312, *Matta Catalogue Raisonné of Graphic Works*,

Published by Roland Sabatier, Paris, 1970



PETER MILTON (b. 1930)

Smoke, 1992

From *Ca' Cappello* #5

Graphite on Paper

20 x 25 inches

Signed and Dated Lower Right

Annotated III:5 Lower Left

Reference: MB.117

JRFA #6862

Literature:

The Primacy of Touch: The Drawings of Peter Milton

Published by: Hudson Hills Press, New York, 1993

Illustrated Page 117



ROBERT MOTHERWELL (1915-1991)

Harvest, With Blue Shadow, 1973

Summer Light Series

Original Color Lithograph and Collage

30 x 12 inches; 35 x 18 ¼ inches (Sheet)

Signed and Numbered "AP VIII" Lower Right

One of 12 Artist Proofs numbered in Roman Numerals, aside the edition of 50,

Gemini G.E.L. blindstamp lower right

Reference: Engberg & Banach.145; Belknap.125

JRFA #11486



REUBEN NAKIAN (1897 - 1986)

Nymphs And Dolphins, 1982-85

Black Crayon with Multi-Color Wash on Paper

19 7/8 x 29 inches

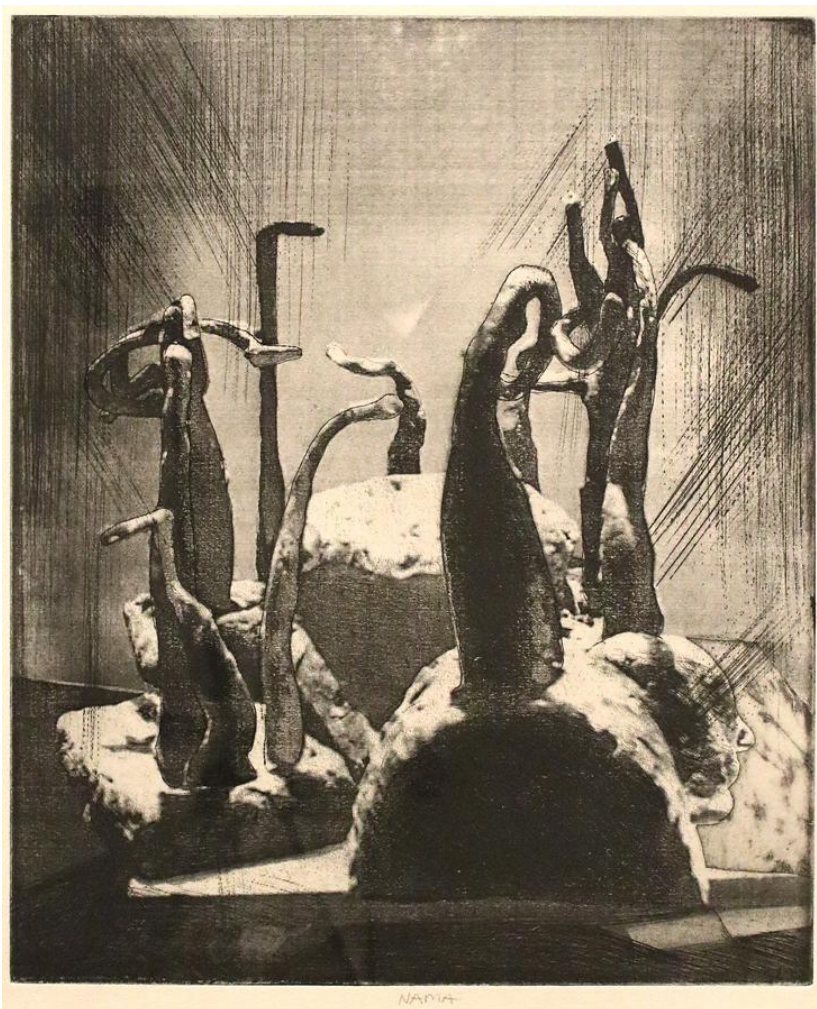
Signed Lower Right

Reference: RN.60.80-064

JRFA #9884

Provenance:

Estate of the artist



GEORGE NAMA (b. 1939)

Untitled, 2002-2017

Etching

16 1/2 x 14 inches

Signed Lower Center

JRFA #11318

Exhibited:

LIBERATOR: George Nama & George Romero
Shepherd W&K Galleries, New York, NY
September 19-October 14, 2017

LIBERATOR: George Nama & George Romero
Jack Rutberg Fine Arts, Los Angeles, CA
October 28-December 23, 2017



DOROTHEA TANNING (1910-2012)

Batean Bleu (The Grotto), 1950

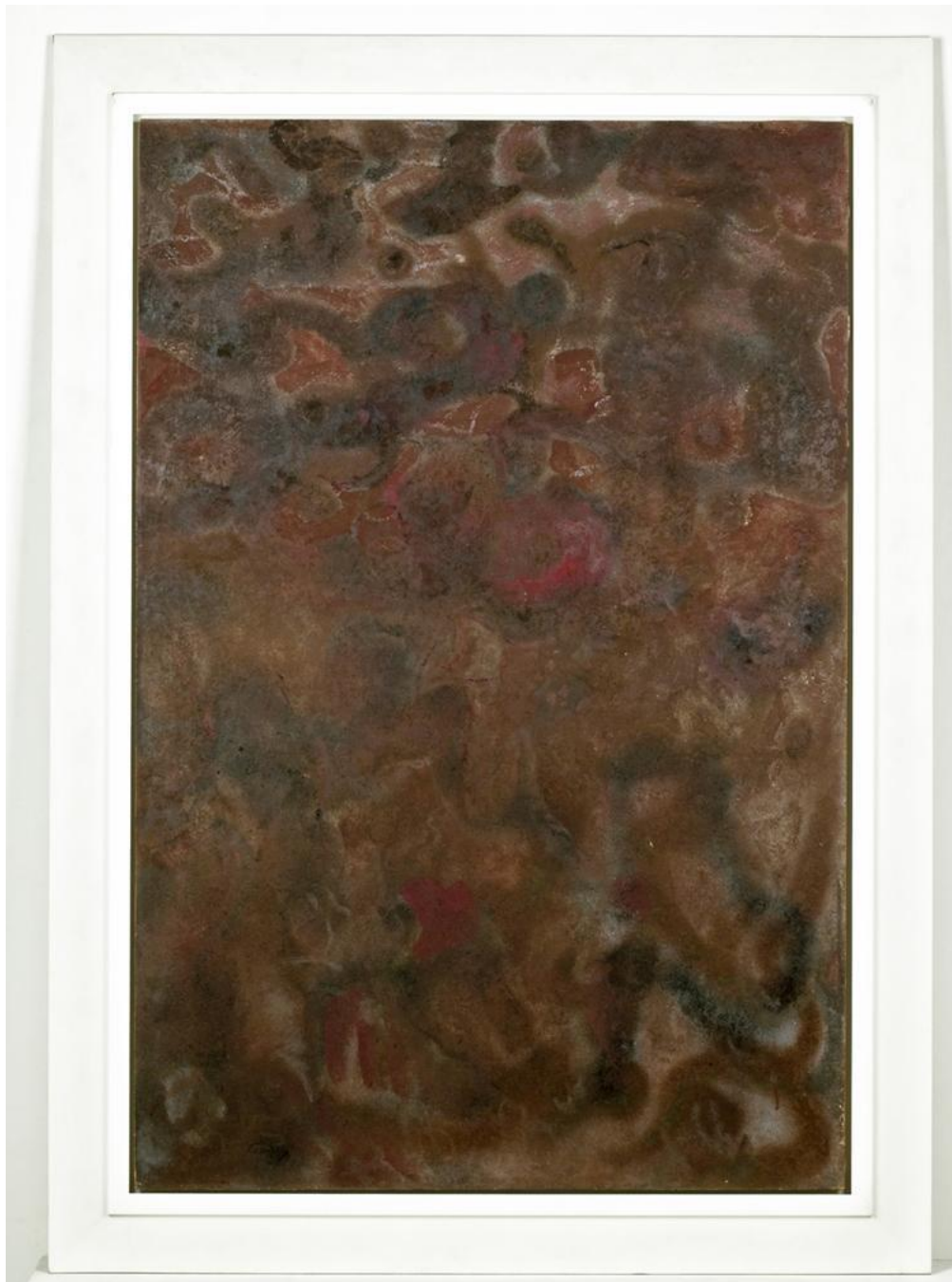
Original Color Lithograph on Paper

22 1/4 x 15 1/8 inches (Sheet); 19 1/2 x 13 3/4 inches (Image)

Signed Lower Left in Pencil

Edition 114/200

JRFA #10406



MARK TOBEY (1880 - 1976)

Untitled, 1970

Oil on Fiberboard Panel

45 ¼ x 30 inches

Signed Lower Left and Verso

JRFA #9239

See Exhibitions and Provenance on next page

Continued – Mark Tobey
View Image on proceeding prior page

Provenance:

Acquired directly from the artist
Charles Craig, Jr., Santa Barbara

Exhibited:

Diverse Directions: The Collection of Charles Craig, Jr.
1987-88
Santa Barbara Museum of Art, CA



MARK TOBEY (1890-1976)

Untitled, 1966

Color Monotype

8 1/8 x 5 3/4 inches

Signed and Dated Lower Right

JRFA #11169

Provenance:

Willard Gallery, New York

Collection Aldis Browne, La Jolla, CA



RUTH WEISBERG (b. 1942)

Antiquities, 1995

Mixed Media Drawing

19 1/2 x 27 inches

Signed and Dated Lower Right

JRFA #4164



JEROME WITKIN (b. 1939)

Corner Of Burnett And W. Fayette (The Lights), 1998

Oil on Canvas

13 x 12 inches

Signed and Dated Right Center

JRFA #6566



JEROME WITKIN (b. 1939)

519 North State Street, 2003

Oil on Canvas

27 x 36 inches

Signed Lower Right

JRFA #8500

Exhibited:

Twin Visions: Jerome Witkin & Joel-Peter Witkin

March 1–August 30, 2014

Jack Rutberg Fine Arts, Los Angeles, CA

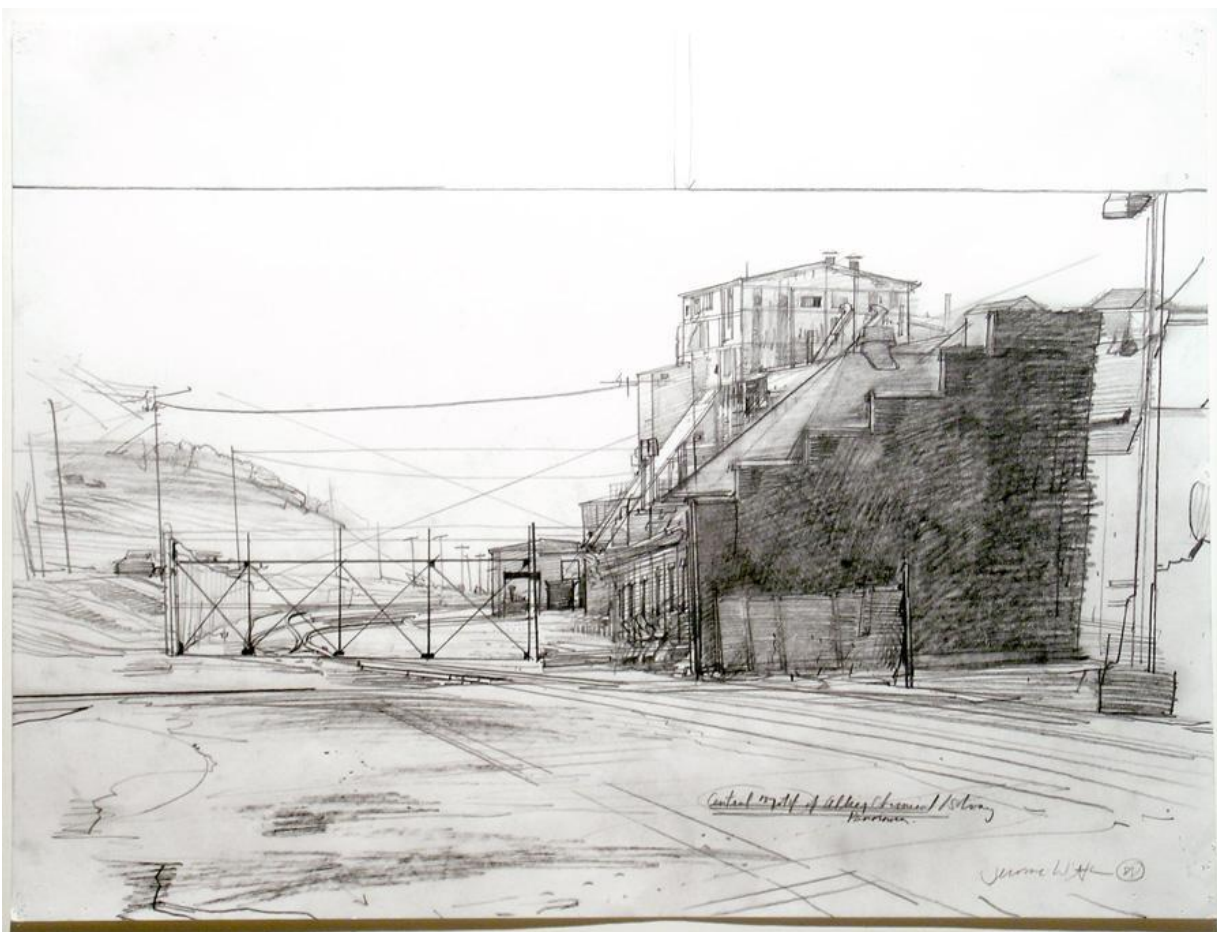
Literature:

Twin Visions: Jerome Witkin & Joel-Peter Witkin

By Jack Rutberg

Published in 2014 by Jack Rutberg Fine Arts, Los Angeles, CA

Illustrated Color Plate, Page 28



JEROME WITKIN (b. 1939)

Urban Scene (Allied Chemical), 1988

Graphite on Paper

18 x 24 inches

Signed, Titled and Dated Lower Right

JRFA #8815

Exhibited:

Jerome Witkin: Drawings

November 5–December 13, 2012

Laguna College of Art and Design, CA



FRANCISCO ZÚÑIGA (1912-1998)

Desnudo (Nude Lying Down, 1966

Yellow Onyx

7 x 19 x 9 inches

Signed and Dated "Zúñiga 1966"

JRFA #11452

Provenance:

Sindin Galleries, NY

Private Collection (acquired from above in 1989)

Bibliography:

Francisco Zúñiga Catalogue Raisonné, Volume I, Sculpture 1923-1993,

Albedrio/Fundacion Zúñiga Laborde, A.C., 1999,

Illustrated Plate 480, Page 294 and

Online Francisco Zúñiga Catalogue Raisonné