

JACK RUTBERG FINE ARTS

357 N. La Brea Avenue · Los Angeles, CA 90036 · Tel (323) 938-5222 · www.jackrutbergfinearts.com

LETTERS FROM LOS ANGELES

November 17 – December 22, 2012



JACK RUTBERG FINE ARTS

357 N. La Brea Avenue · Los Angeles, CA 90036 · Tel (323) 938-5222 · www.jackrutbergfinearts.com

1. **JIM MORPHEUS**
TORSO WITH HEARTS, 1999
Oil, Enamel, Pastel, Charcoal
and Gold Leaf on Wood Panels
30 x 36 inches
JRFA #10415



2. **DOUG EDGE**
AUNT BEE'S WAX, 1990
Acrylic and Beeswax on Panel
15 1/2 x 20 1/4 inches
Signed and Dated Lower Right
JRFA #10426



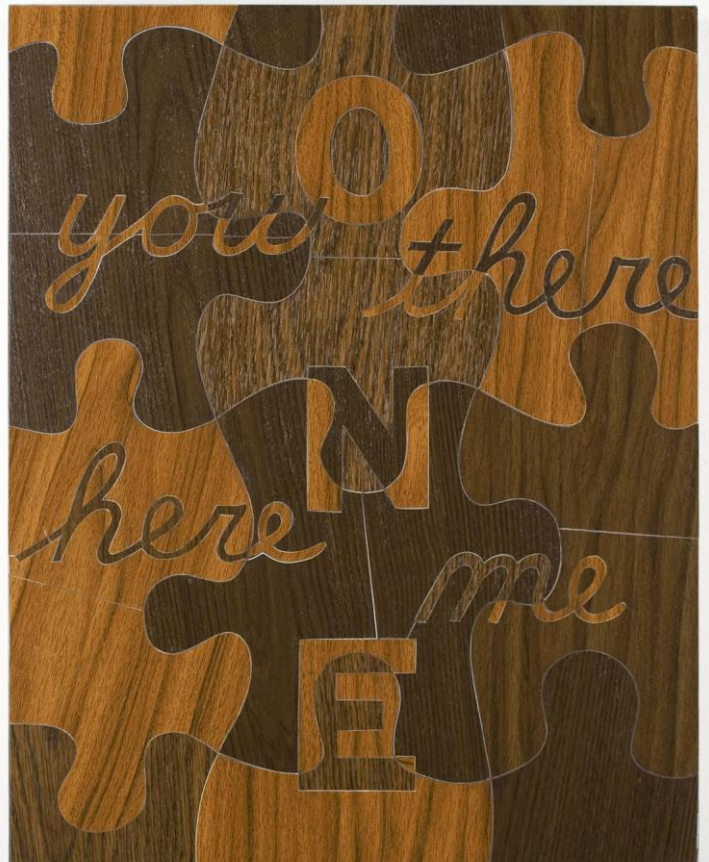
JACK RUTBERG FINE ARTS

357 N. La Brea Avenue · Los Angeles, CA 90036 · Tel (323) 938-5222 · www.jackrutbergfinearts.com

3. **BILL BARMINSKI**
UNTITLED (DON'T DELAY! ENJOY), 1998
Acrylic, Enamel, and Inkjet Print on Panel
12 x 21 inches
Signed and Inscribed on Verso
JRFA #10477



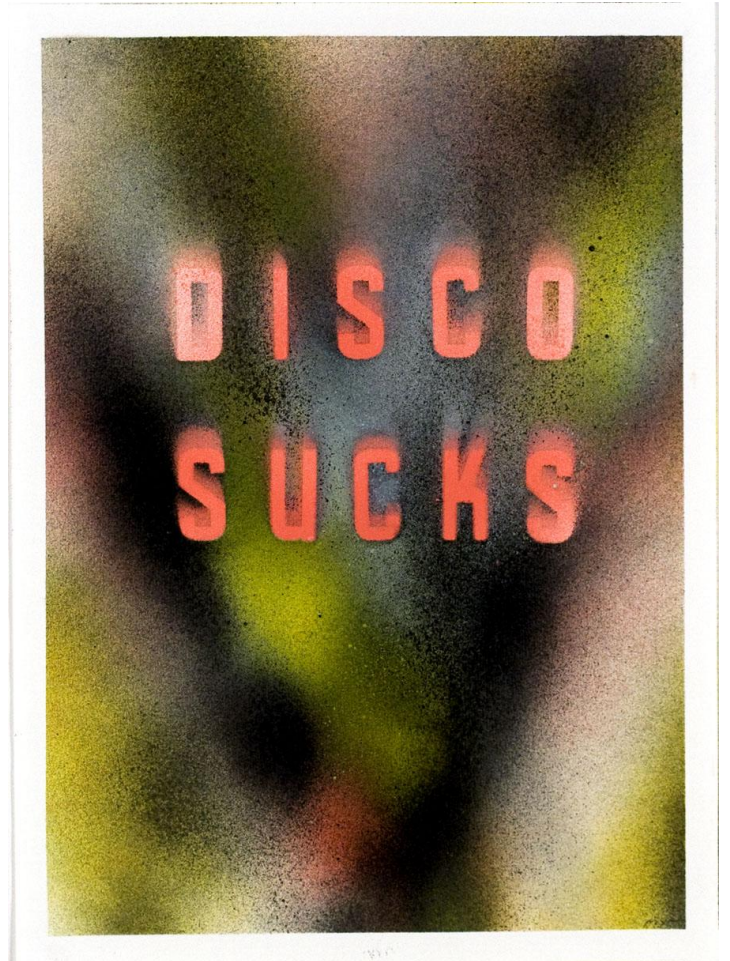
4. **PAULIN PARIS**
ONE/YOU THERE HERE ME, 2009
Contact Paper on Masonite Panel
20 x 16 inches
Signed, Dated and Titled on Verso
JRFA #10427



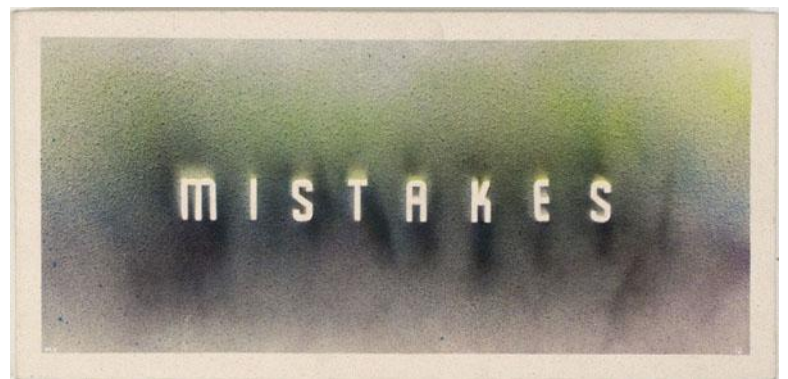
JACK RUTBERG FINE ARTS

357 N. La Brea Avenue · Los Angeles, CA 90036 · Tel (323) 938-5222 · www.jackrutbergfinearts.com

5. **MARK X FARINA**
DISCO, 2012
Aerosol on Rag Paper
15 x 10 3/4 inches
Signed and Dated Lower Right
JRFA #10481



6. **MARK X FARINA**
MISTAKES, 2012
Aerosol on Canvas
13 1/8 x 27 1/4 inches
Signed and Dated on Verso
JRFA #10480



JACK RUTBERG FINE ARTS

357 N. La Brea Avenue · Los Angeles, CA 90036 · Tel (323) 938-5222 · www.jackrutbergfinearts.com

7. **BRUCE NAUMAN**
SUPOSTER, 1973
Original Color Lithograph and Screenprint
36 x 29 1/2 inches
Signed and Dated in Pencil
Edition of 72
JRFA #10420



8. **EDWARD RUSCHA**
LANDMARK DECAY, 2006
Original Color Lithograph
3 1/2 x 9 inches (Image)
9 x 13 inches (Sheet)
Signed and Dated Lower Right
Edition of 70
JRFA #10438



JACK RUTBERG FINE ARTS

357 N. La Brea Avenue · Los Angeles, CA 90036 · Tel (323) 938-5222 · www.jackrutbergfinearts.com

9. **EDWARD RUSCHA**
FURTHER LANDMARK DECAY, 2006
Original Color Lithograph
3 1/2 x 9 inches (Image)
9 x 13 inches (Sheet)
Edition of 50
JRFA #10439



10. **ED KIENHOLZ**
FOR \$990.00, 1991
Aquarelle and Ink on Paper
12 x 16 inches
Signed and Dated Lower Right
JRFA #10437



JACK RUTBERG FINE ARTS

357 N. La Brea Avenue · Los Angeles, CA 90036 · Tel (323) 938-5222 · www.jackrutbergfinearts.com

11. ED RUSCHA

ARTIE'S 90, 2000

Painting on Linen Employing Pigment and Bleach
10 5/8 x 8 1/8 inches

Unique

Signed and dedicated: "For Artie Ed Ruscha 2000"

Dedicated to Artie Shaw on a backing board:

"Tues May 23, 2000 Happy B'day Artie! Ed &
Danna Ruscha"

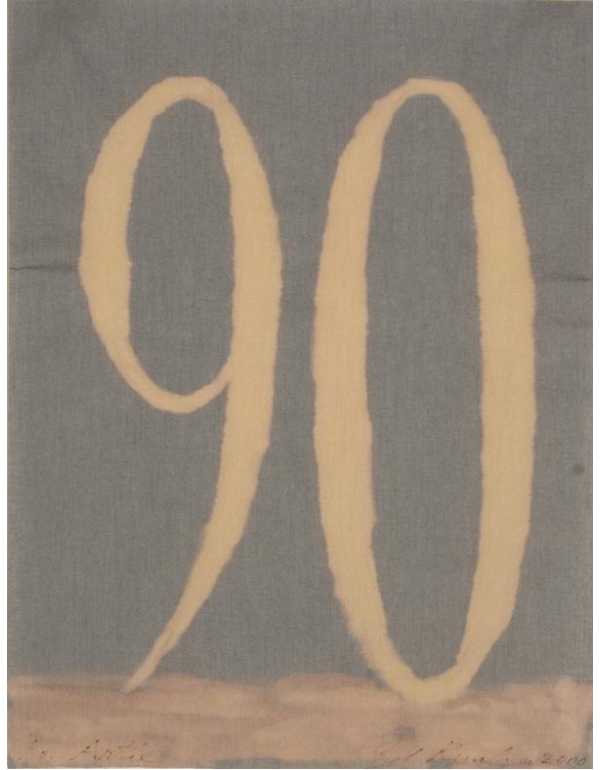
JRFA #9799

Ruscha Studio Reference: P.2000.21

Provenance:

Artie Shaw

The Estate of Evelyn Keyes Huston (Shaw)



12. LARI PITTMAN

UNTITLED #6, 2010

Matte Oil, Aerosol Acrylic and
Cel-Vinyl on Gessoed Paper

29 1/2 x 23 inches

JRFA #10414



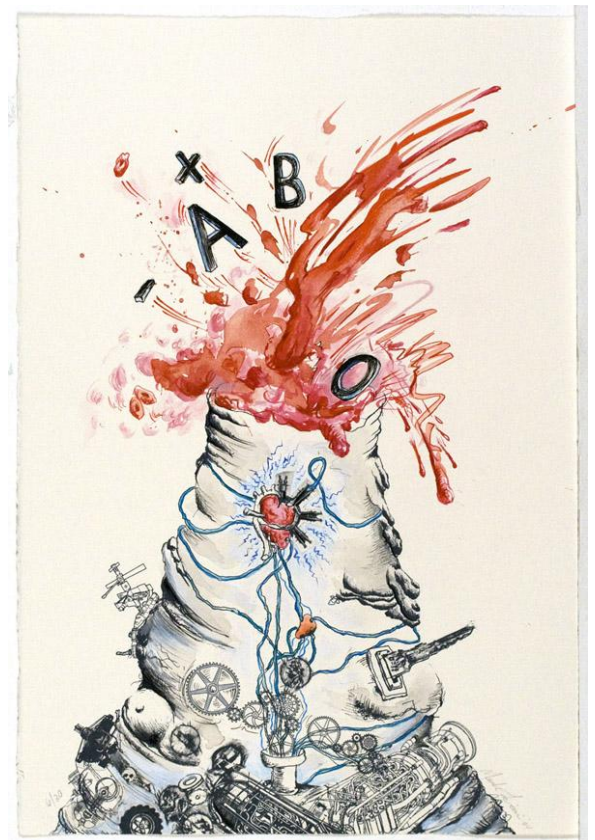
JACK RUTBERG FINE ARTS

357 N. La Brea Avenue · Los Angeles, CA 90036 · Tel (323) 938-5222 · www.jackrutbergfinearts.com

13. **JOHN BALDESSARI**
WHAT IS ART?, 1989
Ink on Paper Shopping Bag
21 1/2 x 16 inches
Signed and Dated Center
JRFA #10444



14. **MARK LICARI**
PLINIAN HICCUP: BLOODWORKS, 2005
Hand-Colored Lithograph
22 x 15 inches
Signed Lower Right
Edition of 20
JRFA #10424



JACK RUTBERG FINE ARTS

357 N. La Brea Avenue · Los Angeles, CA 90036 · Tel (323) 938-5222 · www.jackrutbergfinearts.com

15. **CHRIS BURDEN**
WHAT IS A FAMILY?, 2001
Original Color Lithograph and Screenprint
26 x 36 inches
Signed and Dated Lower Right
Edition of 70
JRFA #10456



16. **DENNIS HOPPER**
UNTITLED, 1992
Original Color Lithograph
36 x 27 inches
Signed and Dated Lower Left
Edition of 10
JRFA #10416



JACK RUTBERG FINE ARTS

357 N. La Brea Avenue · Los Angeles, CA 90036 · Tel (323) 938-5222 · www.jackrutbergfinearts.com

17. LITA ALBUQUERQUE

THE EDGE, 1992

Original Color Lithograph with Hand
Applied Gold Leaf

15 7/8 x 48 1/2 inches (Image)

27 5/8 x 60 1/4 inches (Sheet)

Signed and Dated Lower Right

Edition of 40

JRFA #10419



18. KEN PRICE

THE PLAIN OF SMOKES, 1981

20 Original Serigraphs: Two of Which Are
Numbered

130/150 and Hand Signed in Pencil By Ken
Price

Accompanying the Poem by Harvey Mudd.

The Justification Page is Numbered and

Signed by Harvey Mudd and Ken Price.

Contained in Original Handmade Box with
Slipcase

15 7/8 x 13 1/4 x 2 1/2 inches

JRFA #10412



JACK RUTBERG FINE ARTS

357 N. La Brea Avenue · Los Angeles, CA 90036 · Tel (323) 938-5222 · www.jackrutbergfinearts.com

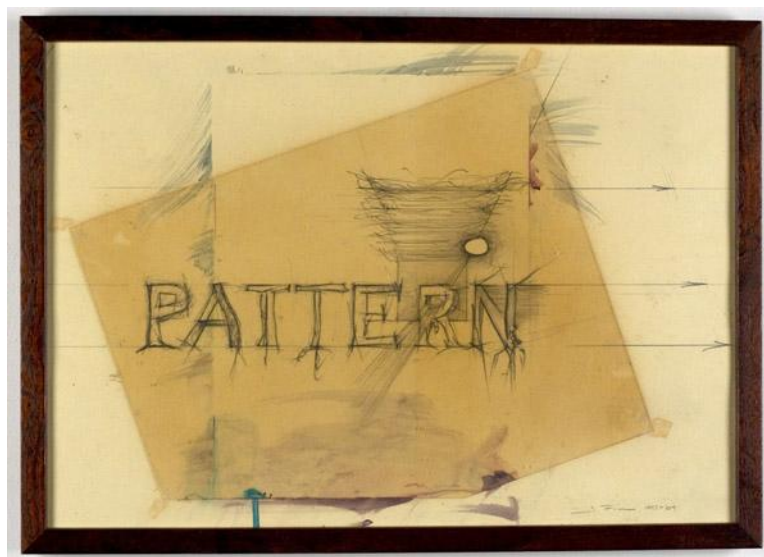
19. WALLACE BERMAN
SEMINA, 1955 – 1964
JRFA #9006

Berman's hand-printed, free-form, art and poetry journal. A brilliant compendium of the most interesting artists and poets of the time, included Berman himself, William Burroughs, Allen Ginsberg, Jess, Joan Brown, Robert Duncan, and John Altoon, Michael McClure, Philip Lamantia, David Meltzer, Charles Bukowski, William S. Burroughs and Jean Cocteau.

This re-issue of the complete *Semina*, re-created by George Herms in 1988-92 and intended as an edition of 300, was never completed and only a fraction of the edition was realized.



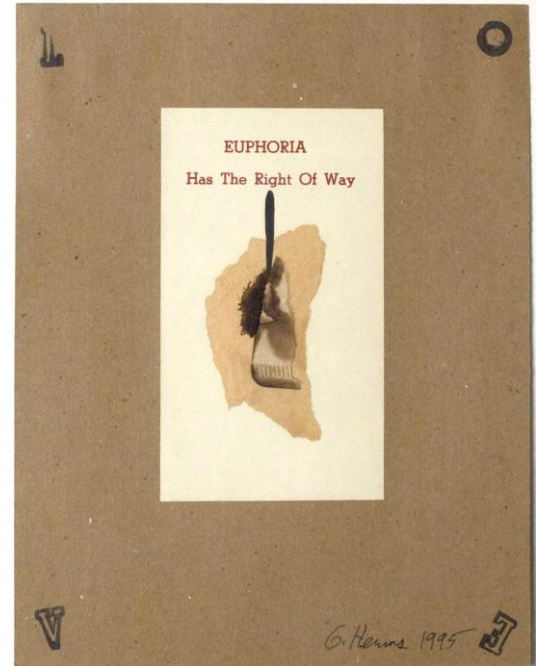
20. JUD FINE
PATTERN, 1997-2004
Collage, Graphite, and Mixed Media on Paper
14 x 20 inches
Signed and Dated Lower Right
JRFA #10422



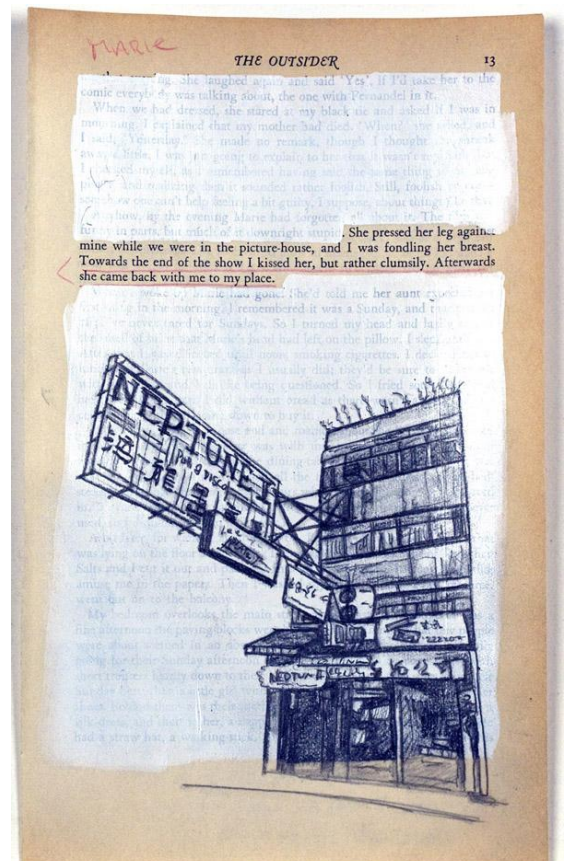
JACK RUTBERG FINE ARTS

357 N. La Brea Avenue · Los Angeles, CA 90036 · Tel (323) 938-5222 · www.jackrutbergfinearts.com

21. **GEORGE HERMS**
EUPHORIA HAS THE RIGHT OF WAY #2, 1995
Collage
11 x 8 1/2 inches
Signed and Dated Lower Right
JRFA #4079



22. **CHARLES LABELLE**
NEPTUNE III, 2011
Gesso and Graphite on Printed Page
8 1/2 x 5 1/2 inches
Signed, Titled and Dated on Verso
JRFA #10448



JACK RUTBERG FINE ARTS

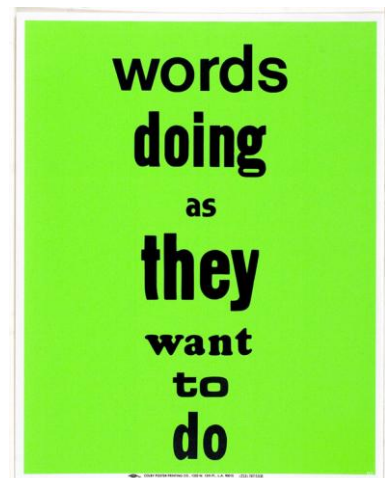
357 N. La Brea Avenue · Los Angeles, CA 90036 · Tel (323) 938-5222 · www.jackrutbergfinearts.com

23. **LYNN HANSON**
STANDARD, 2010
Original Color Lithograph
22 1/4 x 15 inches
Signed and Dated Lower Right
Edition of 20
JRFA #10467



24. **EVE FOWLER**
A SPECTACLE AND NOTHING STRANGE, 2012
Set of Twenty Original Lithograph Posters with
Text From Gertrude Stein's "Tender Buttons"
28 x 22 inches
Edition of Approximately 100
Each Work Will Be Signed By the Artist
JRFA #10484

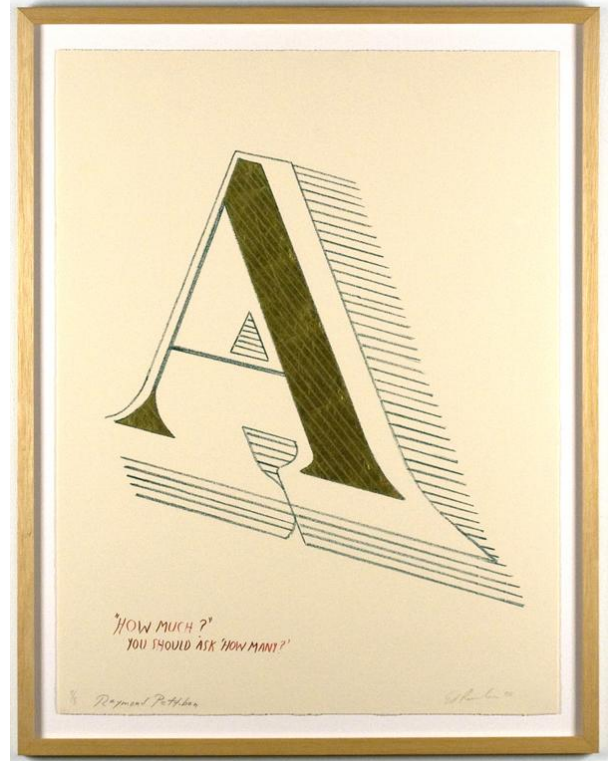
Two Examples Shown From the Set of Twenty Works.



JACK RUTBERG FINE ARTS

357 N. La Brea Avenue · Los Angeles, CA 90036 · Tel (323) 938-5222 · www.jackrutbergfinearts.com

25. **ED RUSCHA AND RAYMOND PETTIBONE**
ARTS AND LETTERS STATE III, 2008
Original Lithograph Hand Colored with Gold Leaf
29 1/2 x 22 inches
Signed Lower Left
Signed and Dated Lower Right
Edition of 8
JRFA #10418



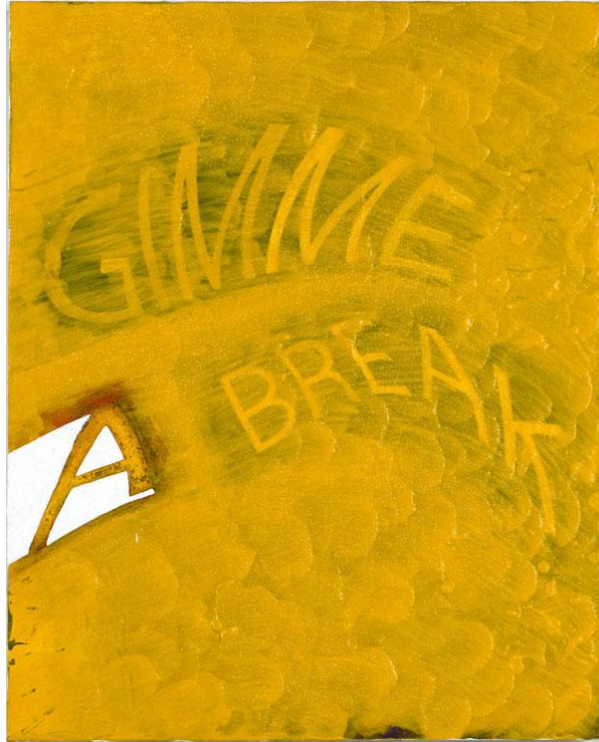
26. **RAYMOND PETTIBONE**
UNTITLED (HOWEVER VAST...), 2007
Original Color Lithograph
30 3/4 x 22 1/4 inches
Signed Lower Right
Edition of 20
JRFA #10468



JACK RUTBERG FINE ARTS

357 N. La Brea Avenue · Los Angeles, CA 90036 · Tel (323) 938-5222 · www.jackrutbergfinearts.com

27. **SCOTT GRIEGER**
GIMME A BREAK, 2012
Acrylic on Panel
20 x 16 inches
Signed and Dated on Verso
JRFA #10458



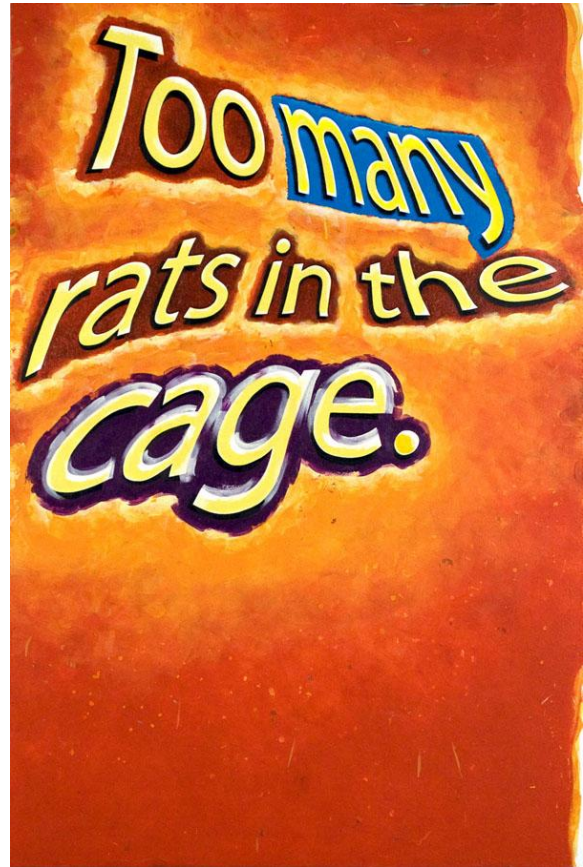
28. **SCOTT GRIEGER**
THIS AND THAT, 2012
Acrylic on Canvas on Panel
20 1/2 x 16 inches
Signed and Dated on Verso
JRFA #10457



JACK RUTBERG FINE ARTS

357 N. La Brea Avenue · Los Angeles, CA 90036 · Tel (323) 938-5222 · www.jackrutbergfinearts.com

29. **SCOTT GRIEGER**
TOO MANY RATS IN THE CAGE, 2012
Acrylic on Panel
60 x 40 inches
Signed and Dated on Verso
JRFA #10460



30. **ALEXIS SMITH**
FLATLINE, 2012
Found Labeled Photo and Stenciled Object
24 x 32 inches (Combined)
JRFA #10483



JACK RUTBERG FINE ARTS

357 N. La Brea Avenue · Los Angeles, CA 90036 · Tel (323) 938-5222 · www.jackrutbergfinearts.com

31. **STAS ORLOVSKI**
SCULPTURE WITH BOOKS, 2011
Oil, Charcoal, Ink, Graphite, Xerox Transfer
and Monoprint on Paper Laid on Canvas
24 x 24 inches
Signed, Dated and Titled on Verso
JRFA #10465



32. **TOM WUDL**
UNTITLED, c. 1984
Acrylic, Paper Punch
28 3/4 x 19 inches
JRFA #10445



JACK RUTBERG FINE ARTS

357 N. La Brea Avenue · Los Angeles, CA 90036 · Tel (323) 938-5222 · www.jackrutbergfinearts.com

**33. HUGUETTE CALAND
UNTITLED, 2010**

Mixed Media on Canvas

29 1/2 x 28 1/4 inches

JRFA #10417



**34. BRUCE RICHARDS
CIRCUMLOCUTION, 2007**

Oil on Linen

32 x 34 inches

Signed, Dated and Titled on Verso

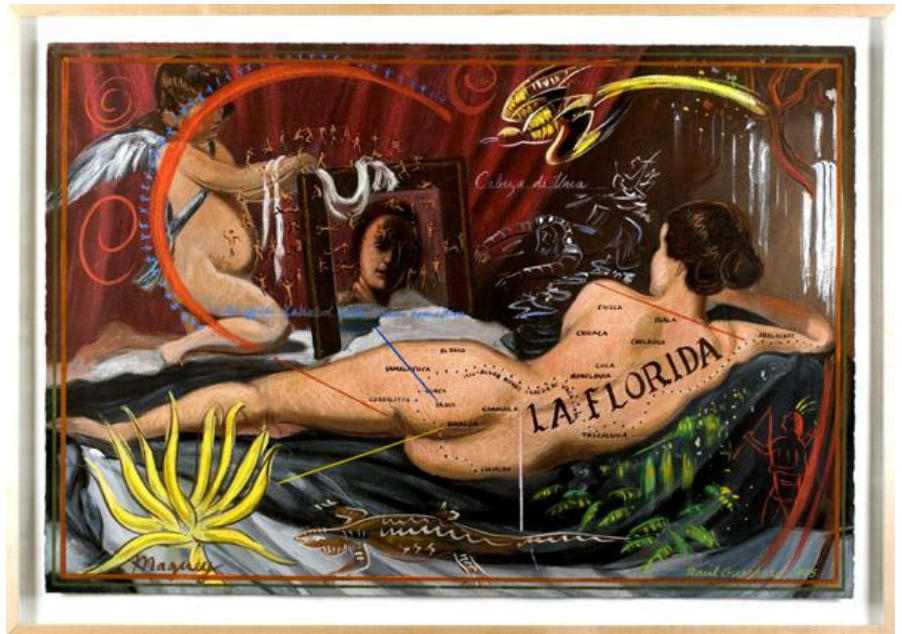
JRFA #10409



357 N. La Brea Avenue · Los Angeles, CA 90036 · Tel (323) 938-5222 · www.jackrutbergfinearts.com

357 N. La Brea Avenue · Los Angeles, CA 90036 · Tel (323) 938-5222 · www.jackrutbergfinearts.com

Gouache and Pastel on Paper
30 x 44 1/2 inches
Signed and Dated Lower Left
JRFA #10447



Color Pencil on Rag Paper
50 x 37 1/2 inches
JRFA #10433



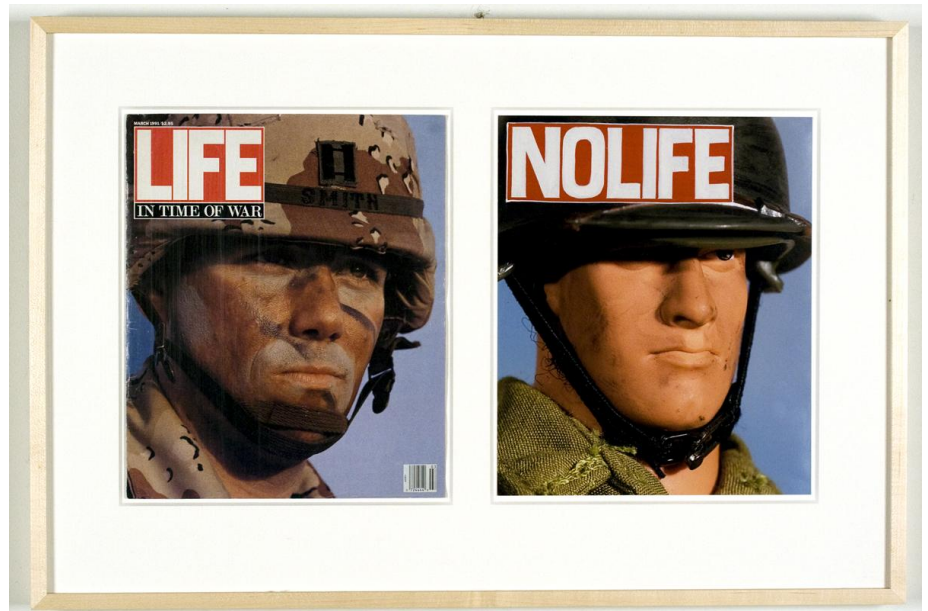
JACK RUTBERG FINE ARTS

357 N. La Brea Avenue · Los Angeles, CA 90036 · Tel (323) 938-5222 · www.jackrutbergfinearts.com

37. **RICHARD SHELTON**
ASSISTED READYMADE, 2008
Gouache on Magazine Illustration
10 5/8 x 17 3/8 inches
Signed and Titled on Verso
JRFA #10441



38. **RICHARD SHELTON**
LIFE/ NO LIFE, 2012
Magazine Cover, Enamel on Photograph by Stacie Meyer
Two Panels, 12 x 10 inches each
Signed and Titled on Verso
JRFA #10442



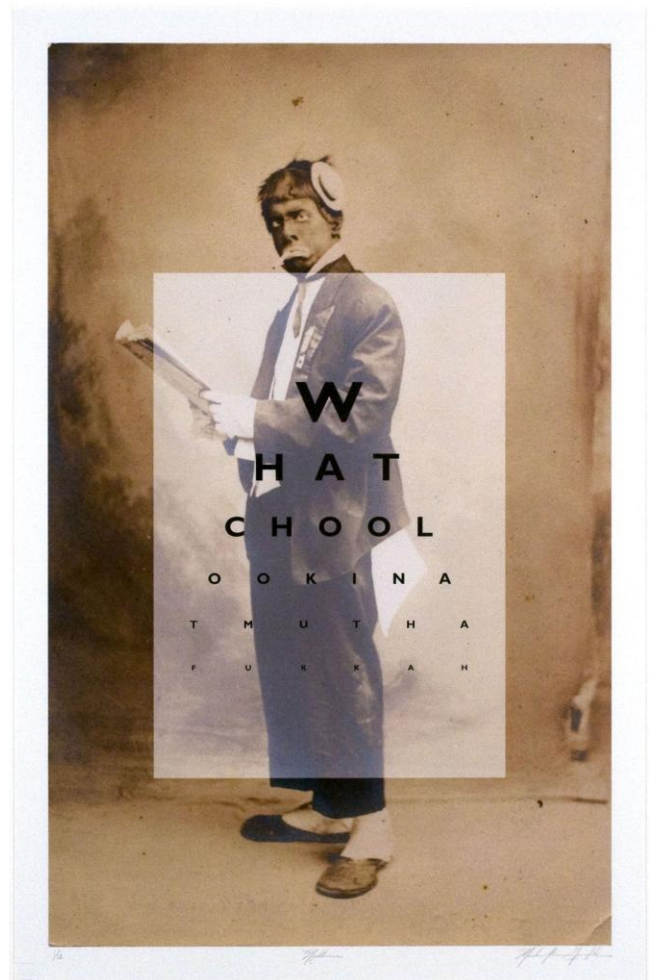
JACK RUTBERG FINE ARTS

357 N. La Brea Avenue · Los Angeles, CA 90036 · Tel (323) 938-5222 · www.jackrutbergfinearts.com

39. **RICHARD SHELTON**
THREE SHELLS, 2000
Oil on Canvas
22 3/4 x 22 inches
Signed and Titled on Verso
JRFA #10440



40. **MARK STEVEN GREENFIELD**
NIGHTMARE, 2001
Inkjet Print
38 1/4 x 24 inches
Signed Lower Right
Edition of 12
JRFA #10463



JACK RUTBERG FINE ARTS

357 N. La Brea Avenue · Los Angeles, CA 90036 · Tel (323) 938-5222 · www.jackrutbergfinearts.com

41. **GAJIN FUJITA**
DEMON HANYA (STATE I), 2004
Hand Colored Lithograph with Gold Leaf
28 5/8 x 27 1/2 inches
Signed and Dated Lower Right
Edition of 20
JRFA #10428



42. **HANS BURKHARDT**
BASEL, 1981
Oil on Canvas
50 x 60 inches
Signed and Dated Lower Right
JRFA #0842

Provenance:
Estate of Hans Burkhardt (1904-1994)

Exhibited:
Catastrophe According to Hans Burkhardt
January 25 - March 2, 1990
Muhlenberg College, Allentown, PA

Hans Burkhardt: A Retrospective
International Arts Festival
University Art Galway, Galway, Ireland
July 8 - July 29, 1990

Hans Burkhardt Memorial Exhibition
February 6 - March 19, 1995
Portland Art Museum, OR

Literature:
Hans Burkhardt: Basel
Preface by Jack V. Rutberg and an essay by Aurelio de la Vega
Published by Jack Rutberg Fine Arts, Los Angeles, 1983
Cover Illustration, Illustrated Color Plate 11.

Catastrophe According to Hans Burkhardt
By Donald Kuspit, Published by Muhlenberg College, PA, 1990
Illustrated Color Plate 23.



JACK RUTBERG FINE ARTS

357 N. La Brea Avenue · Los Angeles, CA 90036 · Tel (323) 938-5222 · www.jackrutbergfinearts.com

43. BRUCE RICHARDS

MASK, 1994

Painted Bronze with Ribbon

7 1/2 x 7 1/2 x 1/2 inches

JRFA #10410



44. DAVID ALLAN PETERS

UNTITLED, 2012

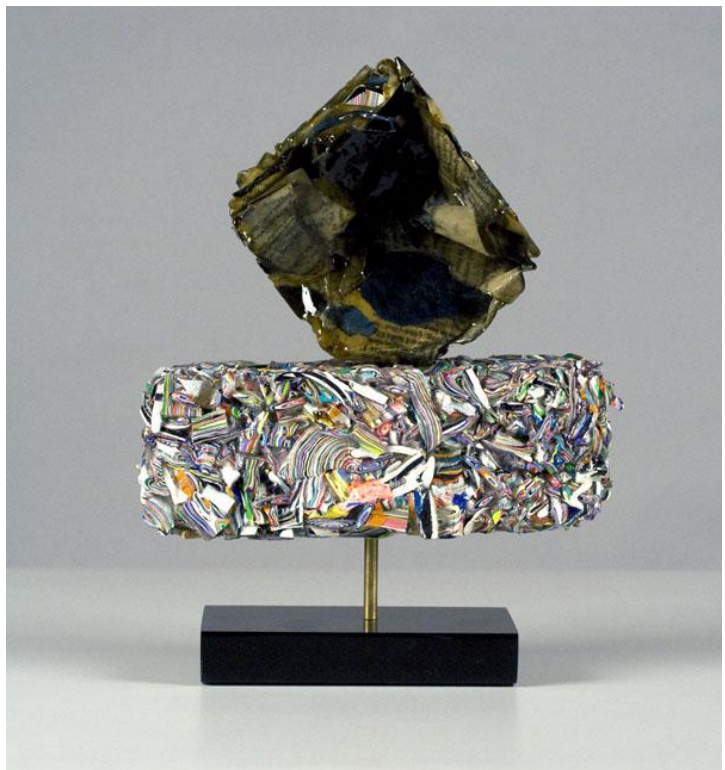
Acrylic Paint and Paper Construction

11 1/2 x 8 1/2 x 2 1/2 inches

Signed Underneath

Unique

JRFA #10421



JACK RUTBERG FINE ARTS

357 N. La Brea Avenue · Los Angeles, CA 90036 · Tel (323) 938-5222 · www.jackrutbergfinearts.com

45. MICHAEL C. MCMILLEN
ULYSSES VERSUS THE MEANING OF TEXAS, 1993

Bronze and Mixed Media

Unique

16 3/8 x 10 x 7 3/8 inches

Signed and Dated Underside

JRFA #10413

